

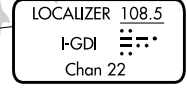
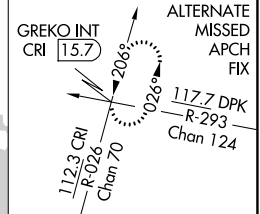
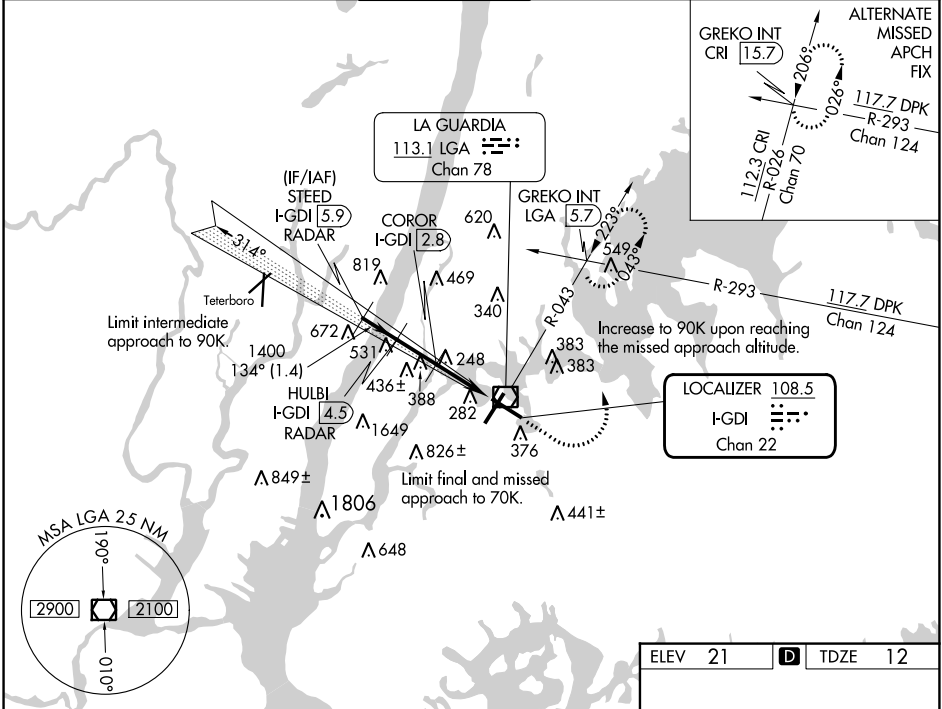
LOC/DME I-GDI <b>108.5</b> Chan <b>22</b>	APP CRS <b>134°</b>	Rwy Idg TDZE <b>12</b> Apt Elev <b>21</b>	<b>7002</b>
---	------------------------	---	-------------

# COPTER ILS or LOC RWY 13

LAGUARDIA (LGA)

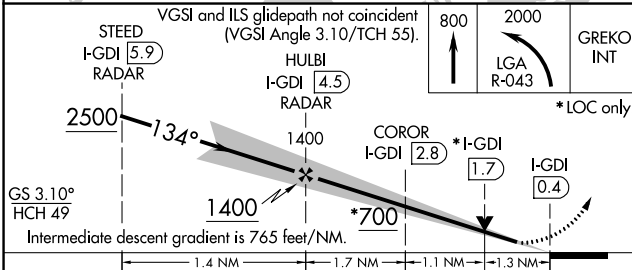
RADAR required for procedure entry. DME or RADAR required.		MALSR	MISSED APPROACH: Climb to 800 then climbing left turn to 2000 on LGA VOR/DME R-043 to GREKO INT/LGA 5.7 DME and hold, continue climb-in-hold to 2000.	
▼		AS		

D-ATIS ARR <b>125.95</b> D-ATIS DEP <b>127.05</b>	NEW YORK APP CON <b>120.8 263.0</b>	LAGUARDIA TOWER <b>118.7 263.0</b>	GND CON <b>121.7 263.0</b>	CLNC DEL <b>135.2</b> <b>121.875 (COPTER)</b>	CPDLC
--	--	---------------------------------------	-------------------------------	---	-------



NE-2, 28 NOV 2024 to 26 DEC 2024

NE-2, 28 NOV 2024 to 26 DEC 2024



ELEV 21	D	TDZE 12
---------	---	---------

TDZ/CL Rws 4, 13 and 22  
HIRL Rws 4-22 and 13-31  
REIL Rwy 31

FAF to MAP 4.1 NM					
Knots	45	60	75	90	105
Min:Sec	5:28	4:06	3:17	2:44	2:21

CATEGORY	COPTER			
H-ILS 13	212/12	200 (200-¼)		
H-LOC 13	700/12	688 (700-¼)		
COROR FIX MINIMUMS				
H-LOC 13	500/12	488 (500-¼)		