

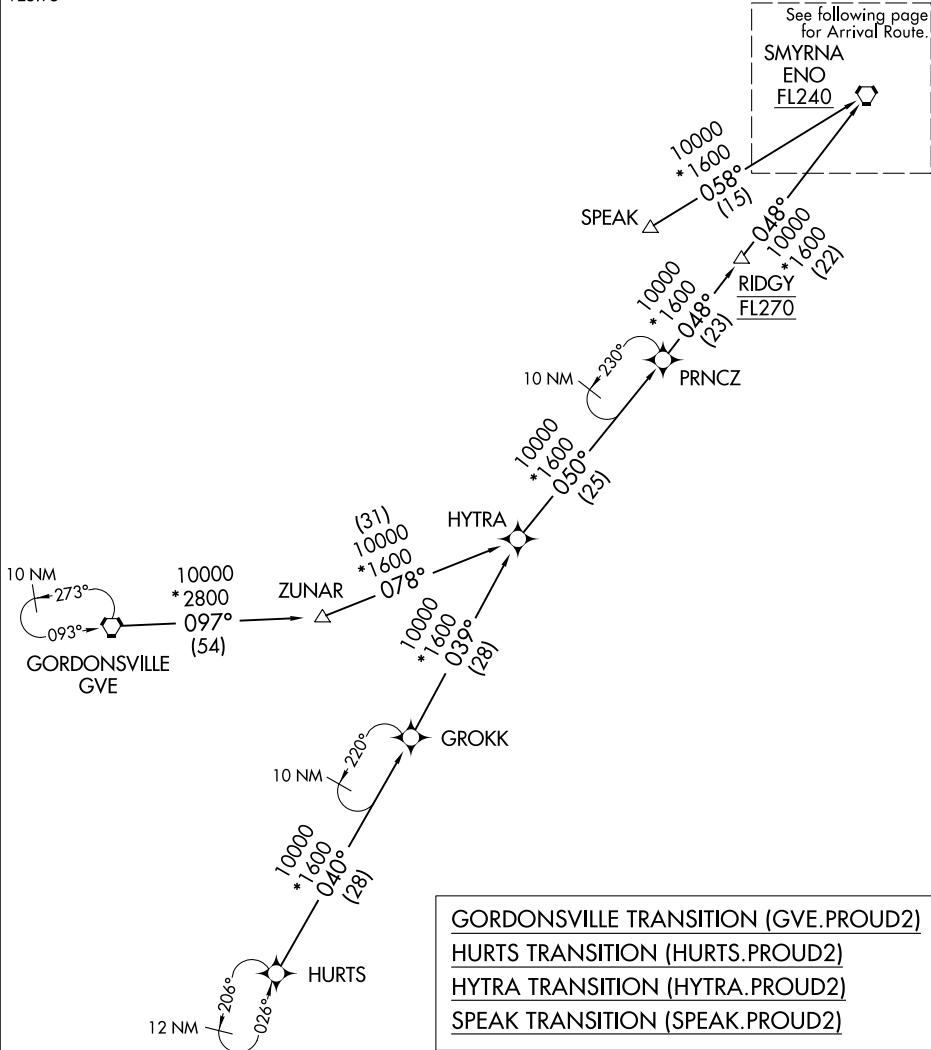
PROUD TWO ARRIVAL (RNAV) Transition Routes

NEW YORK APP CON  
127.3 263.0  
D-ATIS ARR  
125.95

RNAV 1 - DME/DME/IRU or GPS.

RADAR required.

See following page  
for Arrival Route.  
SMYRNA  
ENO  
FL240



GORDONSVILLE TRANSITION (GVE.PROUD2)  
 HURTS TRANSITION (HURTS.PROUD2)  
 HYTRA TRANSITION (HYTRA.PROUD2)  
 SPEAK TRANSITION (SPEAK.PROUD2)

NOTE: Jet aircraft only.  
NOTE: SPEAK transition for Washington Metropolitan departures only.

(CONTINUED ON FOLLOWING PAGE)

NOTE: Chart not to scale.

NE-2, 28 NOV 2024 to 26 DEC 2024

NE-2, 28 NOV 2024 to 26 DEC 2024