

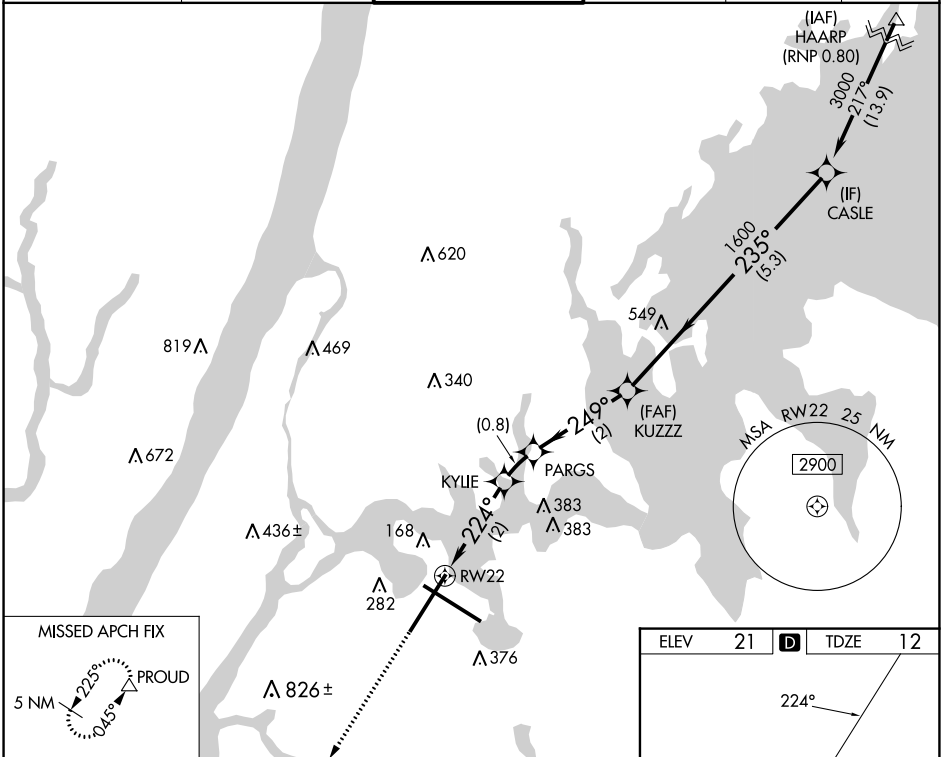
APP CRS	Rwy Idg	<b>7002</b>
<b>224°</b>	TDZE	<b>12</b>
	Apt Elev	<b>21</b>

# RNAV (RNP) Z RWY 22

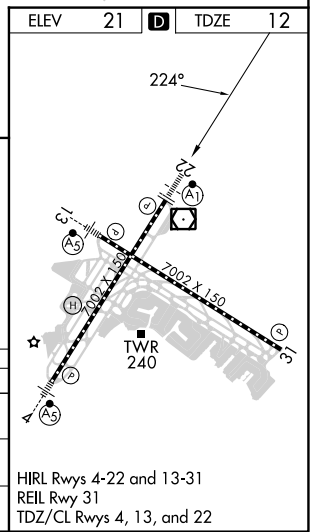
LAGUARDIA (LGA)

RNP AR APCH - GPS. RF required.		ALSF-1 	MISSED APPROACH: Climb to 3000 direct PROUD and hold, continue climb-in-hold to 3000. *Missed approach requires minimum climb of 397 feet per NM to 560.
NA For uncompensated Baro-VNAV systems, procedure NA below -11°C or above 54°C. For inop ALS, increase RNP 0.30 DA* visibility to RVR 5500.			

D-ATIS ARR	<b>125.95</b>	NEW YORK APP CON	<b>120.8 263.0</b>	LAGUARDIA TOWER	<b>118.7 263.0</b>	GND CON	<b>121.7 263.0</b>	CLNC DEL	<b>135.2</b>	CPDLC
D-ATIS DEP	<b>127.05</b>									



3000 PROUD 	VGSi and RNAV glidepath not coincident (VGSi Angle 3.00/TCH 67).			
	KYLIE	PARGS	CASLE	
	704	947	1600	3000
	224°	249°	235°	
	2 NM	0.8 NM	2 NM	5.3 NM
GP 3.00° TCH 52				
CATEGORY	A	B	C	D
RNP 0.30 DA*		384/35	372 (400-3%)	
RNP 0.30 DA		445/40	433 (500-3%)	



**AUTHORIZATION REQUIRED**

NE-2, 28 NOV 2024 to 26 DEC 2024

NE-2, 28 NOV 2024 to 26 DEC 2024