

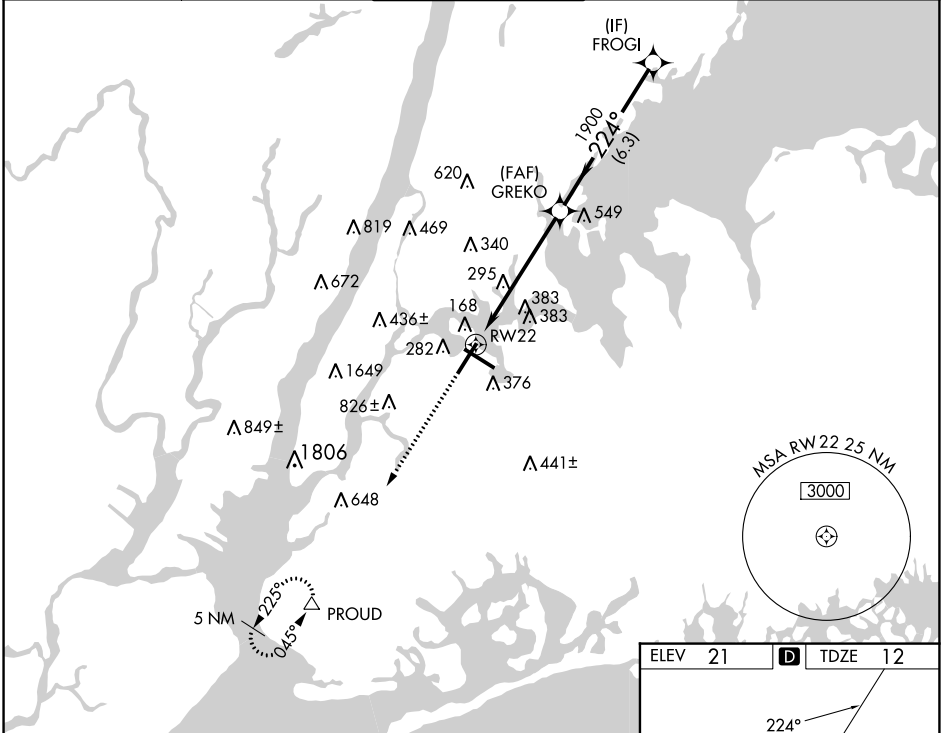
WAAS CH 70318 W22A	APP CRS 224°	Rwy Idg TDZE 12 Apt Elev 21
--	------------------------	---

RNAV (GPS) Y RWY 22

LAGUARDIA (LGA)

RNP APCH - GPS.		ALSF-1	MISSED APPROACH: Climb to 3000 direct PROUD and hold, continue climb-in-hold to 3000.
<p>▼ For uncompensated Baro-VNAV systems, LNAV/VNAV NA below -11°C or above 54°C. Circling NA northwest of Rwy 4 and southwest of Rwy 13.</p>			

D-ATIS ARR 125.95	NEW YORK APP CON D-ATIS DEP 127.05	LAGUARDIA TOWER 118.7 263.0	GND CON 121.7 263.0	CLNC DEL 135.2	CPDLC
--------------------------	--	---------------------------------------	-------------------------------	--------------------------	-------



NE-2, 28 NOV 2024 to 26 DEC 2024

NE-2, 28 NOV 2024 to 26 DEC 2024

3000	PROUD	VGSI and RNAV glidepath not coincident (VGSI Angle 3.00/TCH 67).		FROGI
↑	△			
CATEGORY	A	B	C	D
LPV DA	262/24		250 (300-½)	
LNAV/VNAV DA	527/60		515 (600-1¼)	
LNAV MDA	580/24	568 (600-½)	580/50 568 (600-1)	580/60 568 (600-1¼)
CIRCLING	700-1	679 (700-1)	1080-3 1059 (1100-3)	1260-3 1239 (1300-3)

