

WAAS CH 60918 W04A	APP CRS 044°	Rwy Idg TDZE Apt Elev	7002 21 21
--	------------------------	-----------------------------	---------------------------------------

RNAV (GPS) Y RWY 4

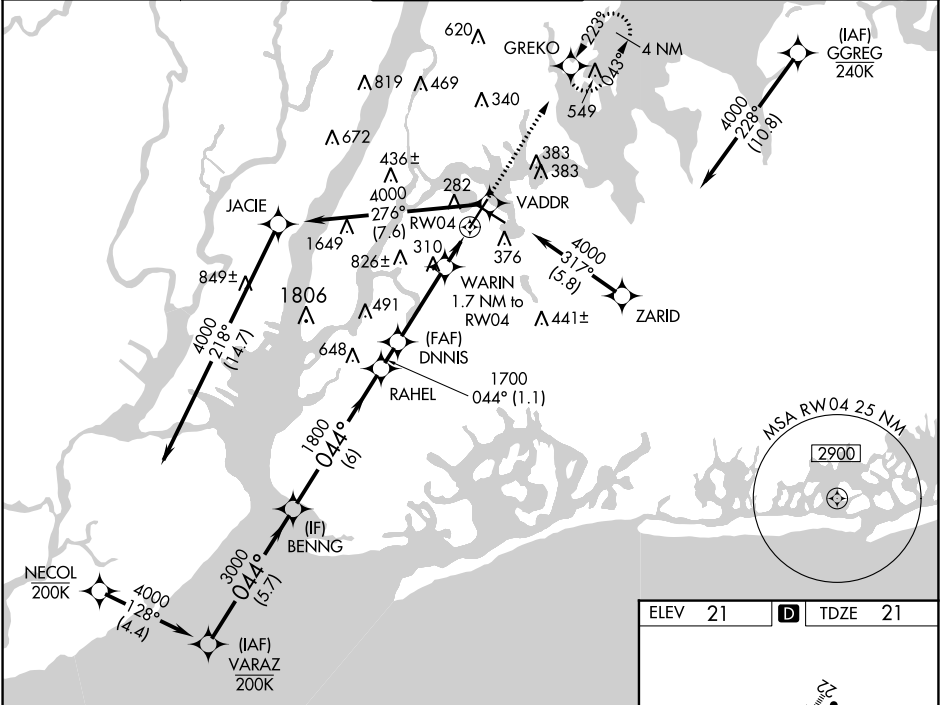
LAGUARDIA (LGA)

RNP APCH - GPS

▼ Rwy 4 helicopter visibility reduction below RVR 5000 NA. Inop table does not apply to LPV all Cats, and LNAV Cat A and B. For uncompensated Baro-VNAV systems, LNAV/VNAV NA below -12°C or above 54°C. For inop ALS, increase LNAV/VNAV all Cats visibility to 1 3/8 SM. Circling NA northwest of Rwy 4 and southwest of Rwy 13. Going below glidepath may not provide obstacle clearance inside DA. Crossing Rwy threshold below charted TCH may not provide required visual area obstacle clearance. *RVR 2400 authorized with FD or AP or HUD to DA.

MALSR	MISSED APPROACH: Climb to 2000 direct GREKO and hold, continue climb-in-hold to 2000.
-------	--

D-ATIS ARR	125.95	NEW YORK APP CON	120.8 263.0	LAGUARDIA TOWER	118.7 263.0	GND CON	121.7 263.0	CLNC DEL	135.2	CPDLC
D-ATIS DEP	127.05									

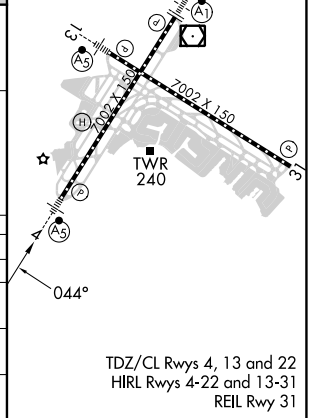


NE-2, 28 NOV 2024 to 26 DEC 2024

NE-2, 28 NOV 2024 to 26 DEC 2024

ELEV	21	TDZE	21
------	----	------	----

BENNG	3000	044°	RAHEL	DNNIS	WARIN	GREKO	2000
							↑
GP 3.14°			1800	1700	640		
TCH 54							
	6 NM		1.1 NM	3.2 NM	1.7 NM		
CATEGORY	A		B		C		D
LPV DA*			271/40		250 (300-3/4)		
LNAV/VNAV DA			499/50		478 (500-1)		
LNAV MDA	560/50		539 (600-1)		560/55		539 (600-1)
CIRCLING	680-1		659 (700-1)		700-2		760-2 1/4
					679 (700-2)		739 (800-2 1/4)



TDZ/CL Rws 4, 13 and 22
HIRL Rws 4-22 and 13-31
REIL Rwy 31