

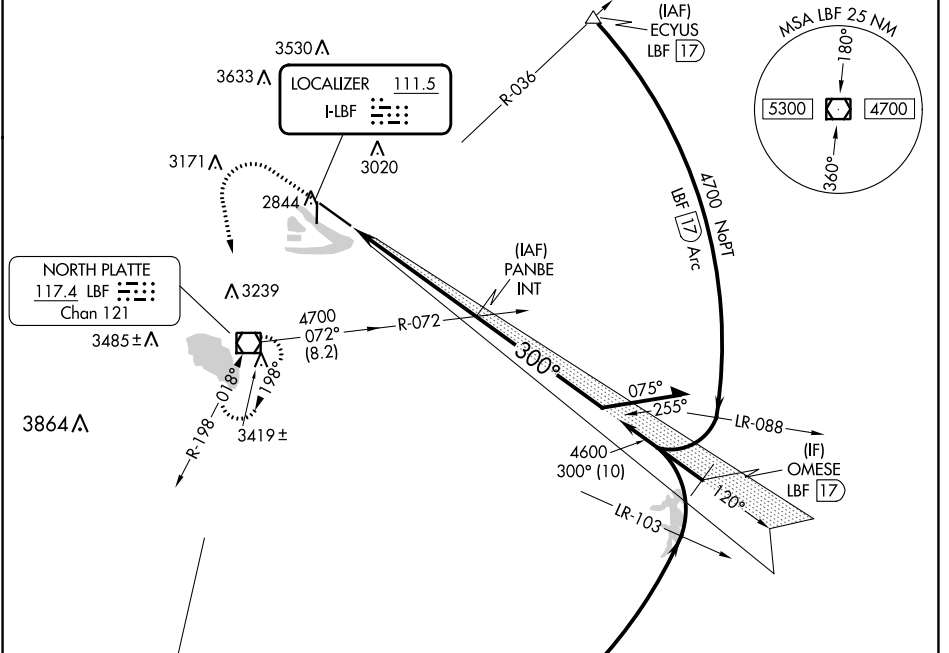
LOC I-LBF <b>111.5</b>	APP CRS <b>300°</b>	Rwy Idg TDZE Apt Elev <b>8001</b> <b>2771</b> <b>2777</b>
---------------------------	------------------------	--

# ILS or LOC RWY 30

NORTH PLATTE RGNL/LEE BIRD FLD (L.B.F.)

	MALSR	MISSED APPROACH: Climb to 4900 then left turn direct LBF VOR/DME and hold.

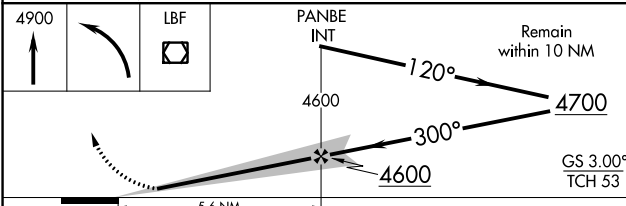
ASOS <b>118.425</b>	DENVER CENTER <b>132.7 226.675</b>	CLNC DEL <b>132.7</b>	UNICOM <b>123.0 (CTAF)</b>
------------------------	---------------------------------------	--------------------------	-------------------------------



NC-2, 28 NOV 2024 to 26 DEC 2024

NC-2, 28 NOV 2024 to 26 DEC 2024

ELEV 2777	TDZE 2771
-----------	-----------



ELEV 2777	TDZE 2771				
HIRL Rwy 12-30	REIL Rwy 35	MIRL Rwy 17-35			
FAF to MAP 5.6 NM					
Knots	60	90	120	150	180
Min:Sec	5:36	3:44	2:48	2:14	1:52

CATEGORY	A	B	C	D
S-ILS 30	2971-1/2 200 (200-1/2)			
S-LOC 30	3200-1/2	429 (500-1/2)	3200-3/4	429 (500-3/4)
CIRCLING	3280-1 503 (600-1)	3340-1 563 (600-1)	3420-1 3/4 643 (700-1 3/4)	3560-2 1/2 783 (800-2 1/2)