

(KATFH3.KATFH) 24249

KATFH THREE DEPARTURE(RNAV)

SAN FRANCISCO BAY OAKLAND INTL (OAK)
AL-294 (FAA) OAKLAND, CALIFORNIA

D-ATIS 133.775
CLNC DEL
121.1
CPDLC
GND CON
121.9 (Rwys 10L/R, 28L/28R, 15/33)
121.75 (Rwy 12/30)
OAKLAND TOWER
118.3 291.65 (Rwys 10L/R, 28L/28R, 15/33)
127.2 256.9 (Rwy 12/30)
NORCAL DEP CON
135.1 307.2

**TOP ALTITUDE:
ASSIGNED BY ATC**

DEPARTURE ROUTE DESCRIPTION

TAKEOFF RUNWAYS 10L, 10R: Climb on heading 098° to 520, then right turn direct to cross ROWLY at or below 3000, then on track 150° to cross VYYDA at or below 4000, then on track 150° to cross KATFH at or above 6000. Thence. . . .

TAKEOFF RUNWAY 12: Climb on heading 116° to 520, then direct to cross ROWLY at or below 3000, then on track 150° to cross VYYDA at or below 4000, then on track 150° to cross KATFH at or above 6000. Thence. . . .

. . . .on (transition). Maintain ATC assigned altitude, expect filed altitude 10 minutes after departure.

KAYEX TRANSITION (KATFH3.KAYEX)

KTINA TRANSITION (KATFH3.KTINA)

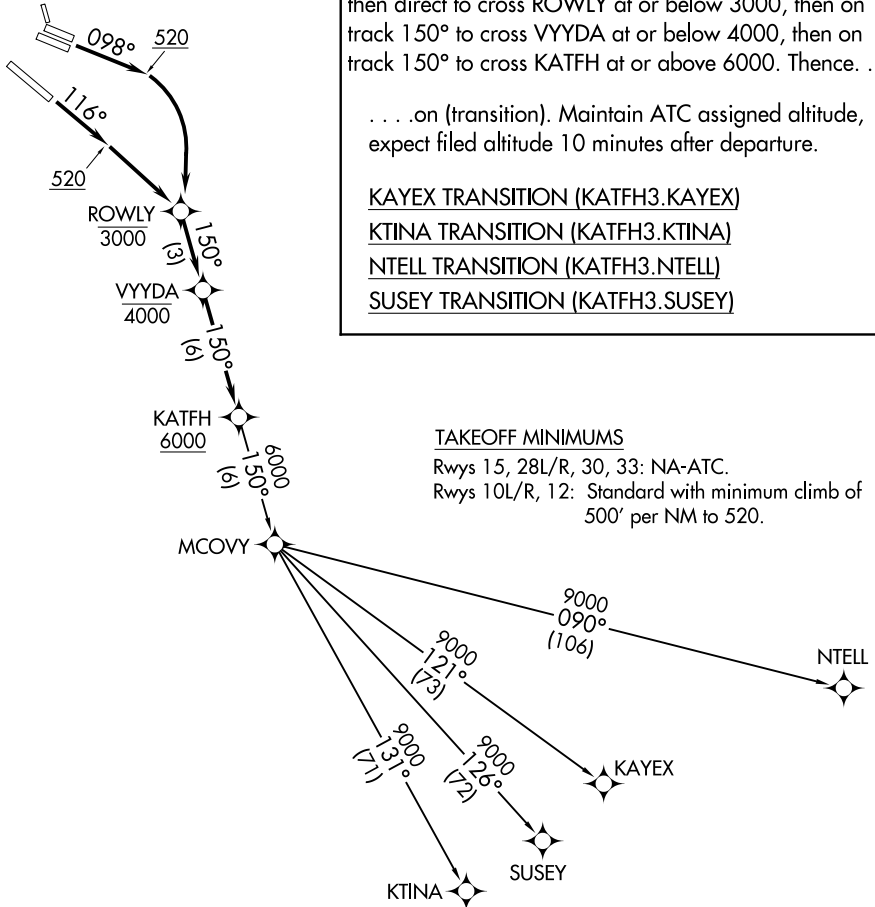
NTELL TRANSITION (KATFH3.NTELL)

SUSEY TRANSITION (KATFH3.SUSEY)

TAKEOFF MINIMUMS

Rwys 15, 28L/R, 30, 33: NA-ATC.

Rwys 10L/R, 12: Standard with minimum climb of 500' per NM to 520.



- NOTE: RNAV 1.
- NOTE: DME/DME/IRU or GPS required.
- NOTE: RADAR required for non-GPS equipped aircraft.

LOSHN
EBAYE

CISKO

NOTE: Chart not to scale.

KATFH THREE DEPARTURE(RNAV)

(KATFH3.KATFH) 12AUG21

OAKLAND, CALIFORNIA
SAN FRANCISCO BAY OAKLAND INTL (OAK)

SW-2, 28 NOV 2024 to 26 DEC 2024

SW-2, 28 NOV 2024 to 26 DEC 2024