

APP CRS	Rwy Idg	<b>6213</b>
<b>278°</b>	TDZE	<b>9</b>
	Apt Elev	<b>9</b>

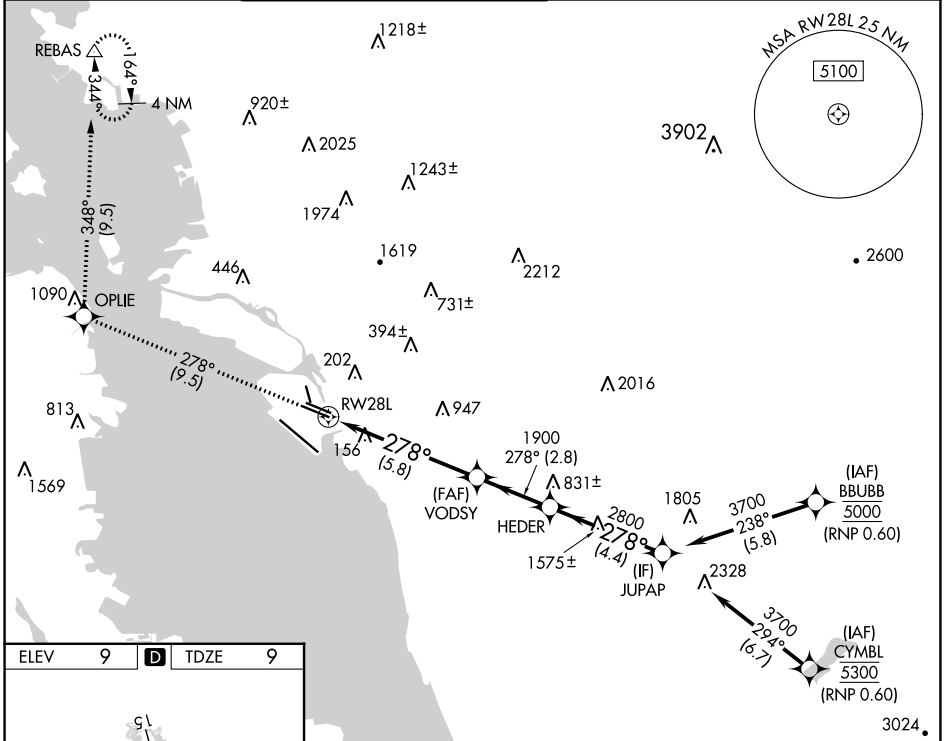
# RNAV (RNP) Z RWY 28L

SAN FRANCISCO BAY OAKLAND INTL (OAK)

▼ For uncompensated Baro-VNAV systems, procedure NA below 0°C (32°F) or above 54°C (130°F). GPS required.

MISSED APPROACH: Climb to 3000 on track 278° to OPLIE and on track 348° to REBAS and hold.

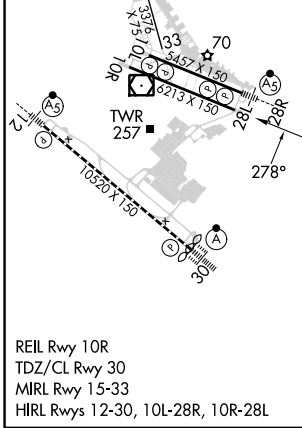
D-ATIS	NORCAL APP CON	OAKLAND TOWER	GND CON	CLNC DEL	CPDLC
<b>133.775</b>	<b>125.35 263.15</b>	<b>118.3 291.65</b> (Rwys 10L/R-28L/R, 15-33) <b>127.2 256.9</b> (Rwy 12-30)	<b>121.9</b> (Rwys 10L/R-28L/R, 15-33) <b>121.75</b> (Rwy 12-30)	<b>121.1</b>	



SW-2, 28 NOV 2024 to 26 DEC 2024

SW-2, 28 NOV 2024 to 26 DEC 2024

ELEV	<b>9</b>	<b>D</b>	TDZE	<b>9</b>
------	----------	----------	------	----------



3000	OPLIE	REBAS	VGSI and RNAV glidepath not coincident (VGSI Angle 3.00/TCH 50).		JUPAP
tr 278°	tr 348°	tr 348°	VODSY	HEDER	JUPAP
			1900	2800	3700
			1900	2800	3700
			5.8 NM	2.8 NM	4.4 NM
CATEGORY	A	B	C	D	
RNP 0.15 DA		341/53	332 (400-1)		
RNP 0.30 DA		399-1¼	390 (400-1¼)		
<b>AUTHORIZATION REQUIRED</b>					