

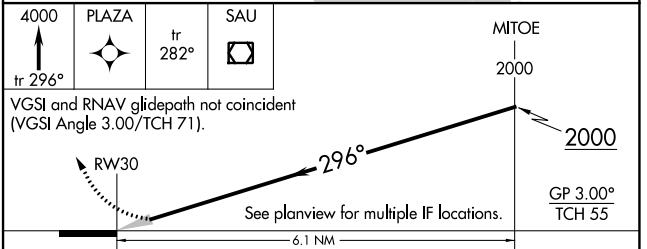
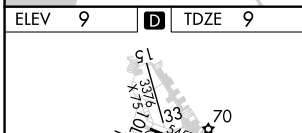
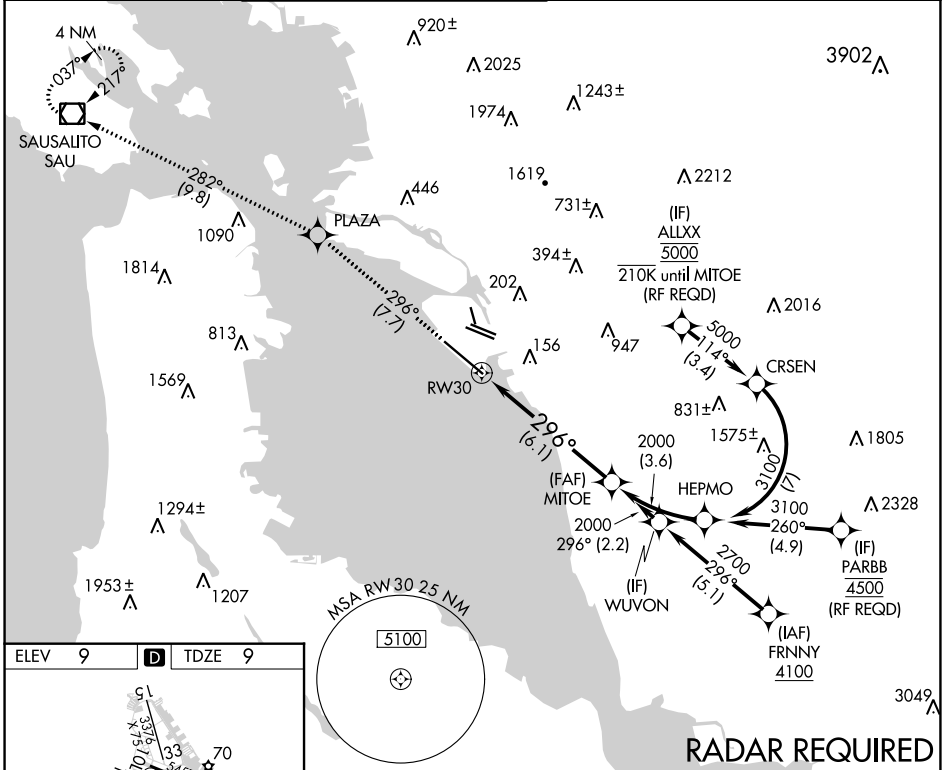
APP CRS	Rwy Idg	<b>10000</b>
<b>296°</b>	TDZE	<b>9</b>
	Apt Elev	<b>9</b>

# RNAV (RNP) Z RWY 30

## SAN FRANCISCO BAY OAKLAND INTL (OAK)

<p><b>GPS required.</b> For uncompensated Baro-VNAV systems, procedure NA below 1°C (34°F) or above 54°C (130°F). For inop ALS increase RNP 0.11 visibility all Cats to RVR 4000.</p>	OAKLAND TOWER	
	D-ATIS	NORCAL APP CON
	<b>133.775</b>	<b>125.35 263.15</b>

ALSIF-2	MISSED APPROACH: Climb to 4000 on track 296° to PLAZA and on track 282° to SAU VOR/DME and hold, continue climb-in-hold to 4000.
GND CON	CLNC DEL
<b>121.9</b> (Rwys 10L/R-28L/R, 15-33)	<b>121.1</b>
<b>121.75</b> (Rwy 12-30)	CPDLC



CATEGORY	A	B	C	D
RNP 0.11 DA		267/24	258 (300-½)	
RNP 0.30 DA		317/24	308 (400-½)	

### AUTHORIZATION REQUIRED

SW-2, 28 NOV 2024 to 26 DEC 2024

SW-2, 28 NOV 2024 to 26 DEC 2024