

WAAS CH <b>72700</b> <b>W28A</b>	APP CRS <b>278°</b>	Rwy Idg TDZE Apt Elev	<b>6213</b> <b>9</b> <b>9</b>
--	------------------------	-----------------------------	-------------------------------------

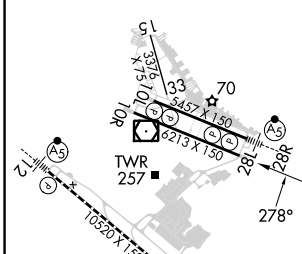
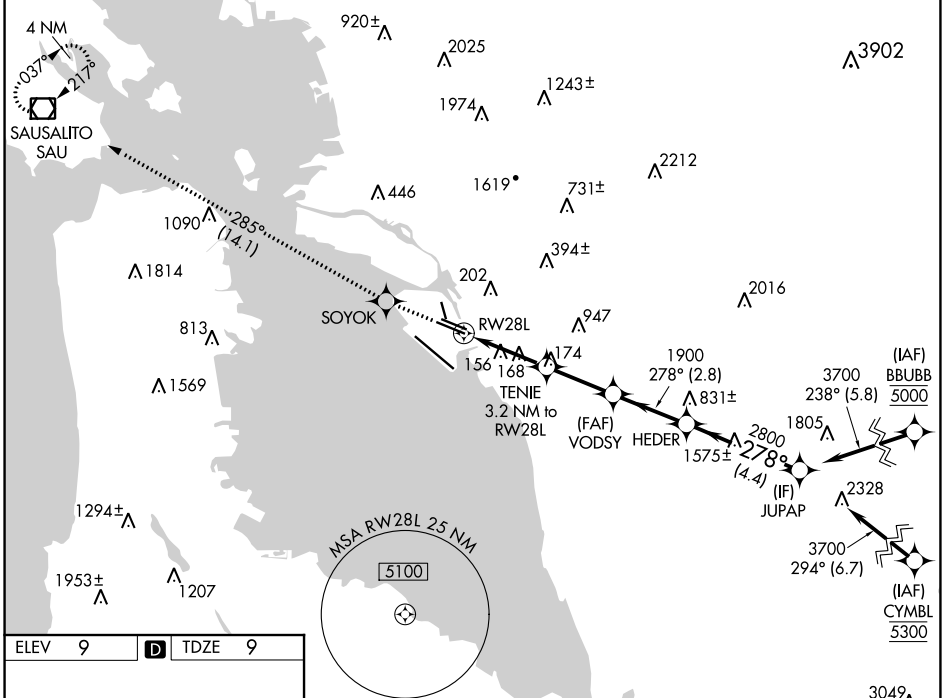
# RNAV (GPS) Y RWY 28L

SAN FRANCISCO BAY OAKLAND INTL (OAK)

**▼** For uncompensated Baro-VNAV systems, LNAV/VNAV NA below 0°C (32°F) or above 54°C (130°F).  
**▲** DME/DME RNP-0.3 NA.

**MISSED APPROACH:** Climb to 4000 direct SOYOK and on track 285° to SAU VOR/DME and hold, continue climb-in-hold to 4000.

D-ATIS <b>133.775</b>	NORCAL APP CON <b>125.35 263.15</b>	OAKLAND TOWER <b>118.3 291.65</b> (Rwys 10L/R-28L/R, 15-33) <b>127.2 256.9</b> (Rwy 12-30)	GND CON <b>121.9</b> (Rwys 10L/R-28L/R, 15-33) <b>121.75</b> (Rwy 12-30)	CLNC DEL <b>121.1</b>	CPDLC
--------------------------	--	--	--	--------------------------	-------



4000 SOYOK	tr 285°	SAU	VGSI and RNAV glidepath not coincident (VGSI Angle 3.00/TCH 50).
*LNAV only		TENIE 3.2 NM to RWY 28L	VODSY HEDER JUPAP
*1.1 NM to RWY 28L		1900	2800 3700
1080*		1900	GP 3.00° TCH 55
1.1 NM		2.1 NM	2.6 NM
		2.8 NM	4.4 NM

CATEGORY	A	B	C	D
LPV DA	209/40 200 (200-¾)			
LNAV/VNAV DA	387-1¼ 378 (400-1¼)			
LNAV MDA	420/55	411 (500-1)	420/60	411 (500-1¼)
<b>C</b> CIRCLING	560-1	551 (600-1)	660-1¾ 651 (700-1¾)	1400-3 1391 (1400-3)

REIL Rwy 10R  
TDZ/CL Rwy 30  
MIRL Rwy 15-33  
HIRL Rwys 12-30, 10L-28R, 10R-28L

SW-2, 28 NOV 2024 to 26 DEC 2024

SW-2, 28 NOV 2024 to 26 DEC 2024