


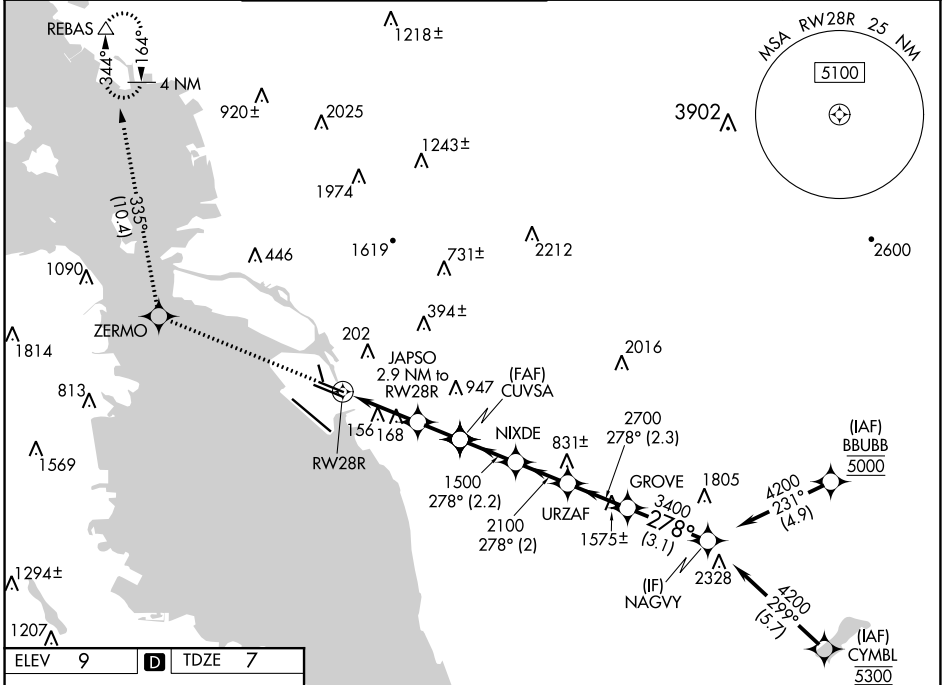
WAAS CH <b>42535</b> <b>W28B</b>	APP CRS <b>278°</b>	Rwy Idg TDZE Apt Elev	<b>5457</b> <b>7</b> <b>9</b>
--	------------------------	-----------------------------	-------------------------------------

# RNAV (GPS) Y RWY 28R

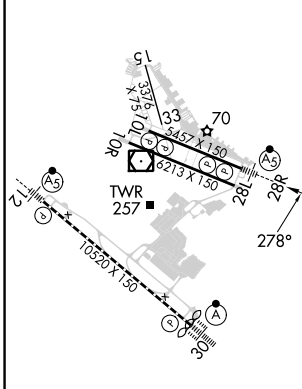
SAN FRANCISCO BAY OAKLAND INTL (OAK)

<p><b>▼</b> DME/DME RNP-0.3 NA. For uncompensated Baro-VNAV systems, LNAV/VNAV NA below 1°C (34°F) or above 54°C (130°F). #RVR 1800 authorized with use of FD or AP or HUD to DA.</p>	<p><b>MALSR</b></p> 	<p><b>MISSED APPROACH:</b> Climb to 3000 direct ZERMO and on track 335° to REBAS and hold.</p>
---	---	--

D-ATIS <b>133.775</b>	NORCAL APP CON <b>125.35 263.15</b>	<p><b>OAKLAND TOWER</b></p> <p><b>118.3 291.65</b> (Rwys 10L/R-28L/R, 15-33) <b>127.2 256.9</b> (Rwy 12-30)</p>	<p><b>GND CON</b></p> <p><b>121.9</b> (Rwys 10L/R-28L/R, 15-33) <b>121.75</b> (Rwy 12-30)</p>	CLNC DEL <b>121.1</b>	CPDLC
--------------------------	--	---	---	--------------------------	-------



ELEV 9	<b>D</b>	TDZE 7
--------	----------	--------



3000	ZERMO	tr	335°	REBAS					
*LNAV only.									
	RW28R	JAPSO	CUVSA	NIXDE	URZAF	GROVE	NAGVY	4200	
	1.2 NM	2.9 NM	1500	2100	2700	3400	278°		GP 3.00°
	1.2 NM	1.7 NM	1.6 NM	2.2 NM	2.2 NM	2.3 NM	3.1 NM		TCH 53
CATEGORY	A		B		C		D		
LPV DA #	207/24		200 (200-½)						
LNAV/VNAV DA	387/40		380 (400-¾)						
LNAV MDA	440/24		433 (500-½)		440/40		433 (500-¾)		
<b>C</b> CIRCLING	560-1		551 (600-1)		660-1¾		1400-3		
					651 (700-1¾)		1391 (1400-3)		

REIL Rwy 10R  
TDZ/CL Rwy 30  
MIRL Rwy 15-33  
HIRL Rwys 12-30, 10L-28R, 10R-28L

SW-2, 28 NOV 2024 to 26 DEC 2024

SW-2, 28 NOV 2024 to 26 DEC 2024