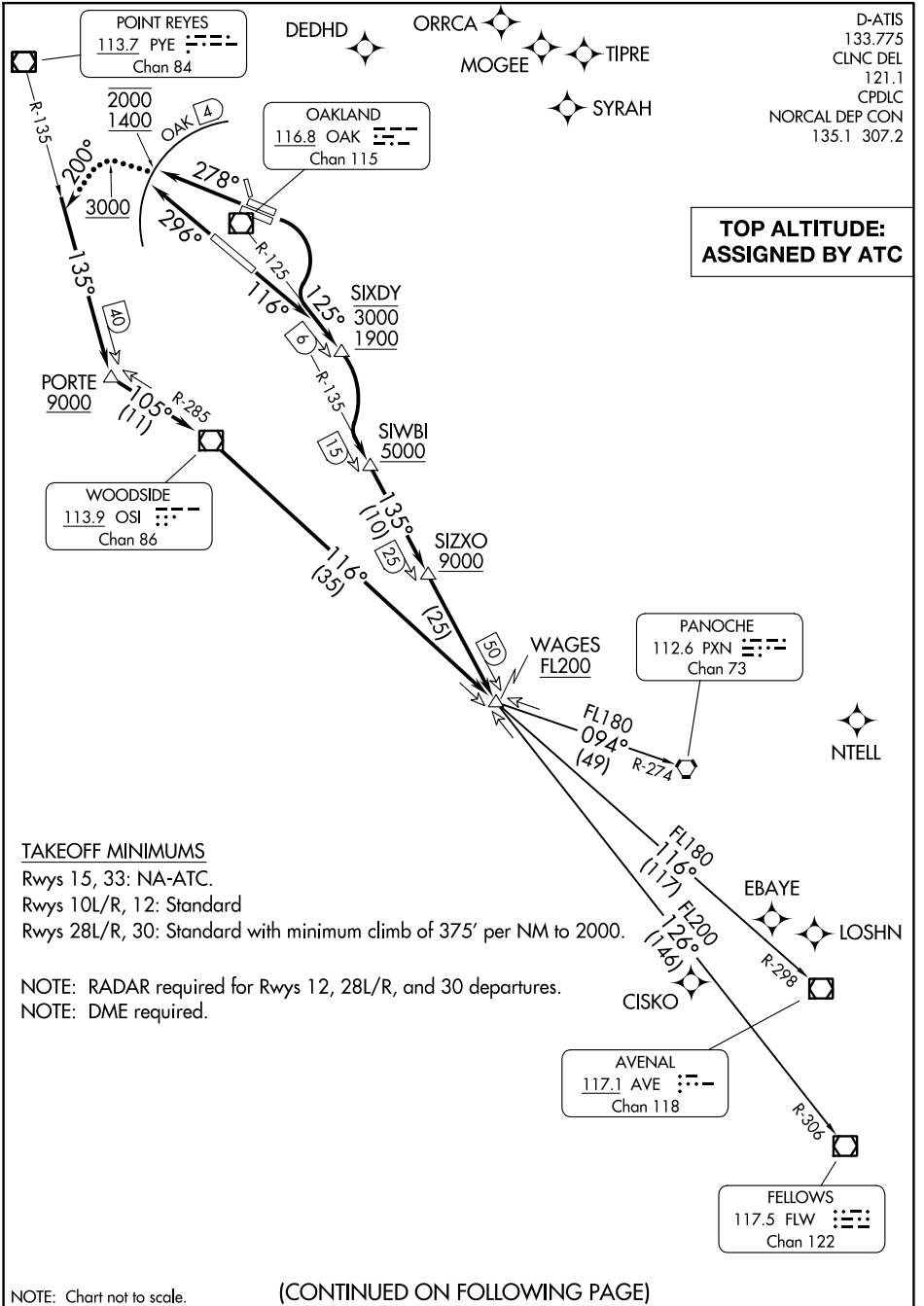


SKYLINE ONE DEPARTURE



**TOP ALTITUDE:
ASSIGNED BY ATC**

SW-2, 28 NOV 2024 to 26 DEC 2024

SW-2, 28 NOV 2024 to 26 DEC 2024

TAKEOFF MINIMUMS

- Rwys 15, 33: NA-ATC.
- Rwys 10L/R, 12: Standard
- Rwys 28L/R, 30: Standard with minimum climb of 375' per NM to 2000.

NOTE: RADAR required for Rwys 12, 28L/R, and 30 departures.
NOTE: DME required.

NOTE: Chart not to scale.

(CONTINUED ON FOLLOWING PAGE)

SKYLINE ONE DEPARTURE