

# LGTING 1 DP (LGTING1.LGTING)

HILL AFB (KHIF)

[USAF]

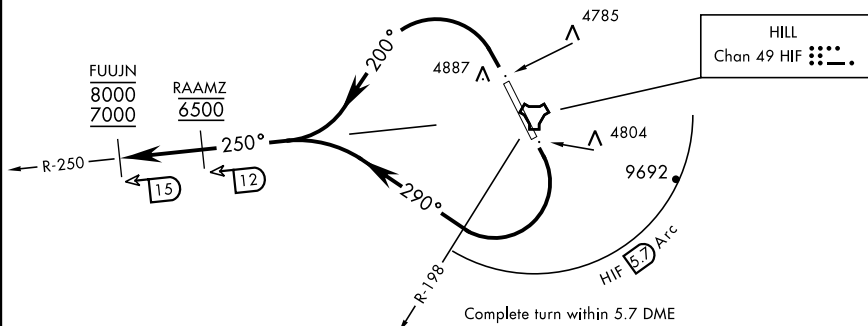
OGDEN, UTAH

ATIS 134.925 397.9  
 CLNC DEL  
 124.1 335.8  
 GND CON  
 121.6 275.8  
 HILL TOWER  
 127.15 263.15  
 SALT LAKE CITY  
 DEP CON  
 121.1 319.25  
 CLOVER CON  
 134.1 285.65

Rwy	Knots	60	120	180	240	300	360
14	V/V(fpm)	2095	4190	6285	8380	10475	12570
32	V/V(fpm)	4610	9220	13830	18440	23050	27660

ATC Climb Rate to 5200

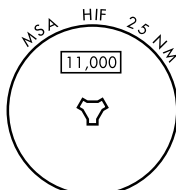
Airspeed in excess of 350 KIAS not  
 authorized until established:  
 Rwy 14 heading 290°  
 Rwy 32 heading 200°



**MANDATORY:** On initial callup with SLC, aircraft will state  
 "Aircraft ID, leaving (alt), climbing for 8000, LGTING 1".

## FOR STEREO FLIGHT PLAN USE ONLY

EMERG SAFE ALT 100 NM 15,700



### DEPARTURE ROUTE DESCRIPTION

**TAKEOFF RWY 14:** Turn right heading 290°, remain within HIF TACAN 5.7 DME until passing the HIF R-198 and established on a heading greater than 256°, intercept HIF R-250 outbound prior to HIF 12 DME, cross RAAMZ at 6500, climb and maintain 7000 block 8000.

**TAKEOFF RWY 32:** Turn left heading 200°, intercept HIF TACAN R-250 outbound prior to HIF 12 DME, cross RAAMZ at 6500, climb and maintain 7000 block 8000.

SW-4, 28 NOV 2024 to 26 DEC 2024

SW-4, 28 NOV 2024 to 26 DEC 2024