

ILS or LOC/DME Z RWY 36

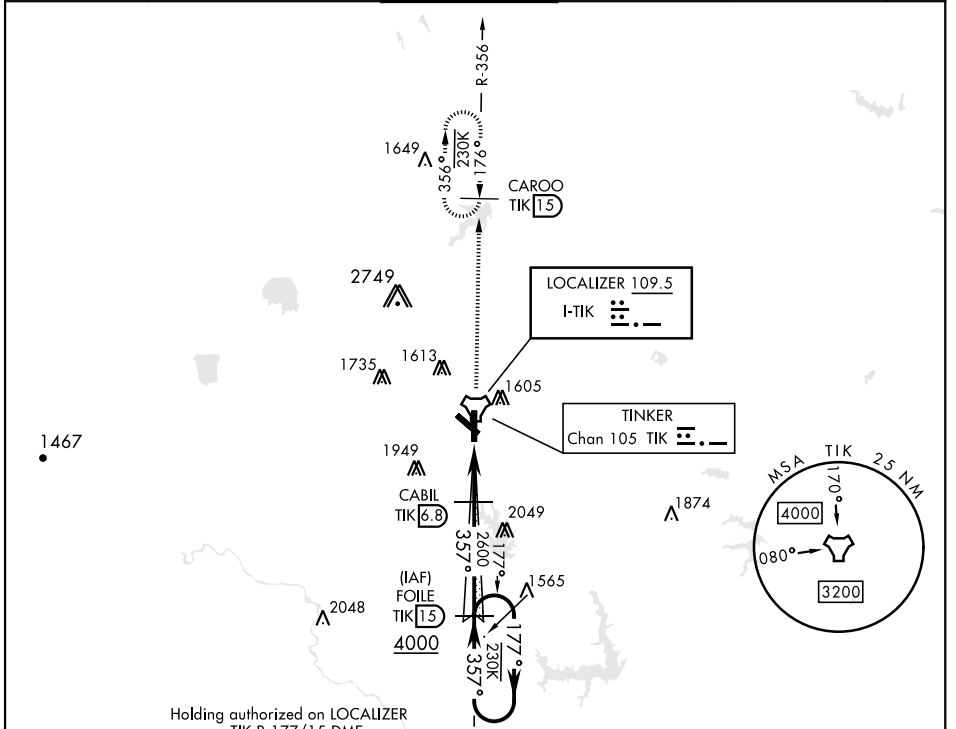
LOC I-TIK 109.5	APCH CRS 357°	Rwy ldg 11,100 TDZE 1291 Arprt Elev 1291
---------------------------	-------------------------	---

[USAF]

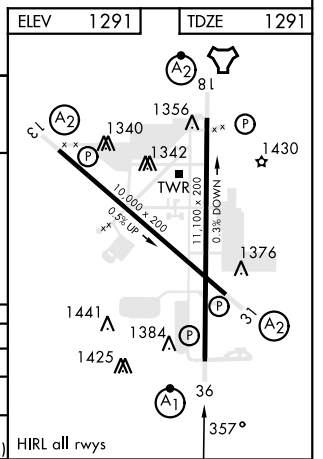
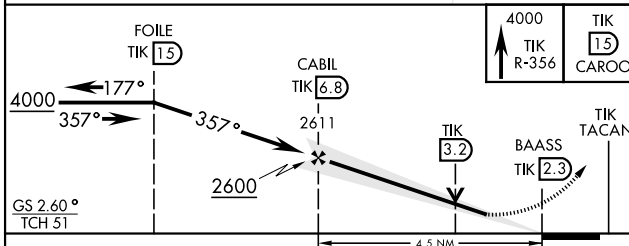
TINKER AFB (KTIK)

<p>▼ * When ALS inop, increase CAT ABC RVR to 50 and vis to 1 mile, CAT DE RVR to 60 and vis to 1 ¼ mile.</p> <p>** CAT E Circling NA to Rwy 18 and in sector S of Rwy 13-31 and W of Rwy 18-36.</p>	<p>ALSF-1</p>	<p>MISSED APPROACH: Climb to 4000 on TIK TACAN R-356 to CAROO and hold.</p>
--	---------------	---

ATIS ★ 270.1	OKE CITY APP CON 120.45 288.325	TOWER 124.45 251.05	GND CON 121.8 275.8	CLNC DEL 119.7 335.8	ASR
------------------------	---	-------------------------------	-------------------------------	--------------------------------	-----



EMERG SAFE ALT 100 NM 4700



CATEGORY	A	B	C	D	E
S-ILS 36	1491/24		200	(200-½)	
S-LOC 36 *	1680/24	389 (400-½)	1680/35	389 (400-¾)	
CIRCLING **	1820-1 529 (600-1)	1840-1 549 (600-1)	1960-1 ¾ 669 (700-1 ¾)	1960-2 669 (700-2)	1960-2 ¼ 669 (700-2 ¼)

HIRL all rwys

ILS or LOC/DME Z RWY 36

SC-1, 28 NOV 2024 to 26 DEC 2024

SC-1, 28 NOV 2024 to 26 DEC 2024