

| | | |
|-------------|----------|-------------|
| APP CRS | Rwy Idg | 8013 |
| | TDZE | 982 |
| 178° | Apt Elev | 985 |

RNAV (RNP) Z RWY 18

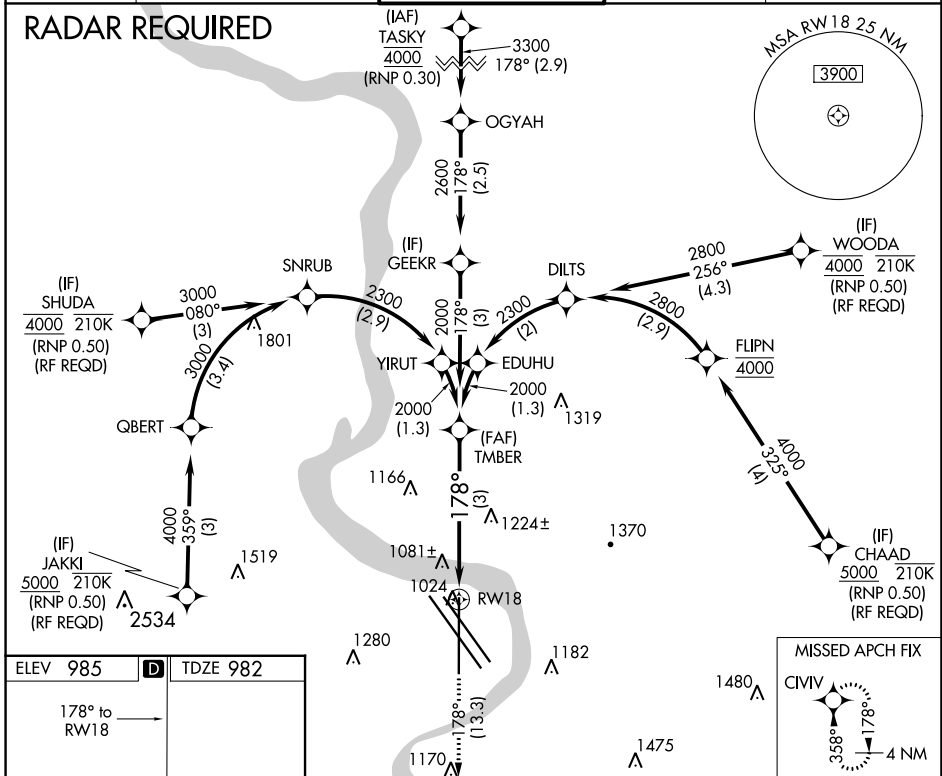
EPPLEY AIRFIELD (OMA)

▽ For uncompensated Baro-VNAV systems, procedure NA below -17°C (2°F) or above 54°C (130°F). For inoperative ALS, increase RNP 0.15 all Cats visibility to 1½ and RNP 0.30 all Cats visibility to 2. GPS required.

MALSR MISSED APPROACH: Climb to 3000 on track 178° to CIVIV and hold.

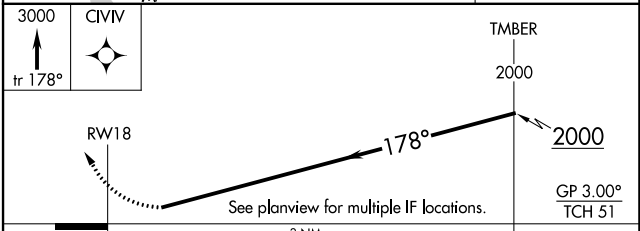
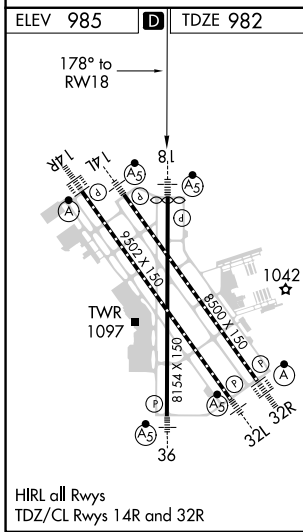
| | | | | |
|--------------|---------------------|--------------------|--------------|--------------|
| D-ATIS | OMAHA APP CON | OMAHA TOWER | GND CON | CLNC DEL |
| 120.4 | 120.1 354.05 | 132.1 256.9 | 121.9 | 119.9 |

RADAR REQUIRED



NC-2, 28 NOV 2024 to 26 DEC 2024

NC-2, 28 NOV 2024 to 26 DEC 2024



| CATEGORY | A | B | C | D |
|-------------|----------------------|---|---|---|
| RNP 0.15 DA | 1341/40 359 (400-¾) | | | |
| RNP 0.30 DA | 1576-1½ 594 (600-1½) | | | |

AUTHORIZATION REQUIRED