


APP CRS	Rwy Idg	<b>8153</b>
<b>358°</b>	TDZE	<b>979</b>
	Apt Elev	<b>985</b>

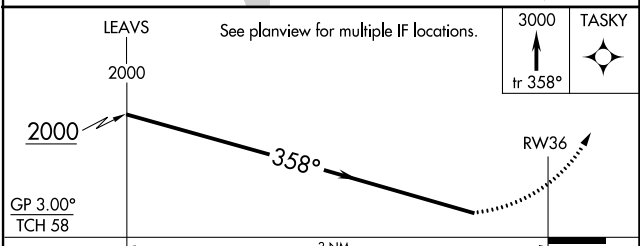
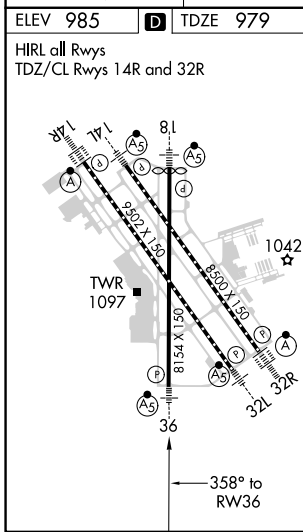
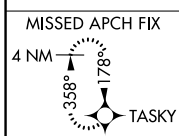
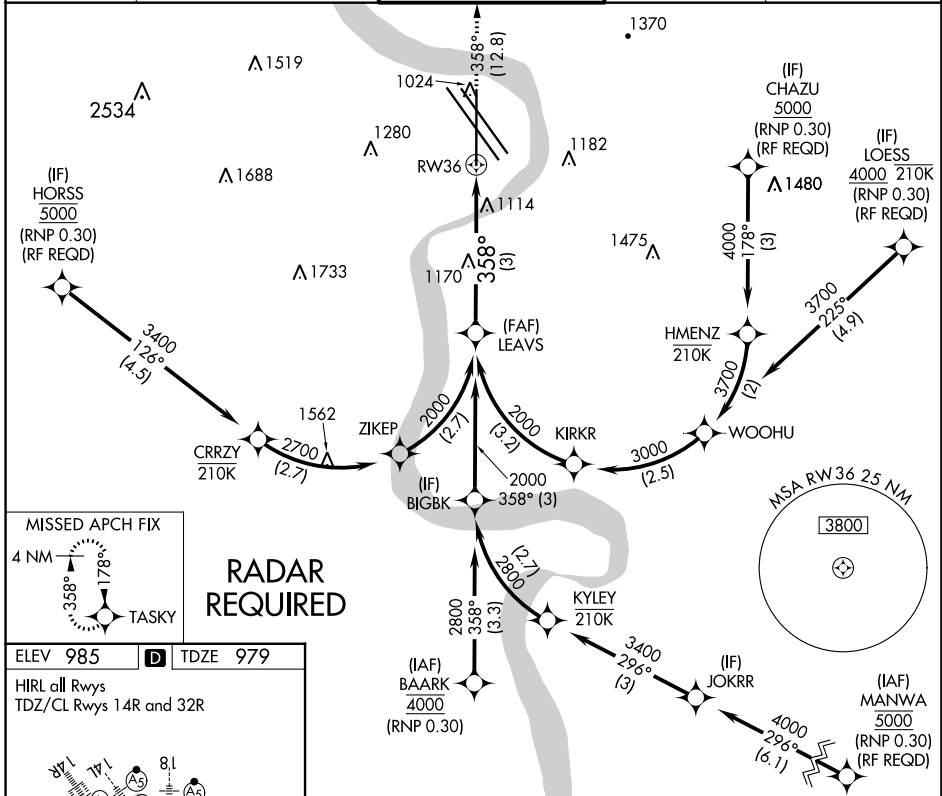
# RNAV (RNP) Z RWY 36

EPPLEY AIRFIELD (OMA)

▼ For uncompensated Baro-VNAV systems, procedure NA below -19°C (-2°F) or above 54°C (130°F). When VGSI inop, procedure NA at night. For inop ALS, increase RNP 0.30 all Cats visibility to 1½ SM. GPS required.

MALSR  MISSED APPROACH: Climb to 3000 on track 358° to TASKY and hold.

D-ATIS	OMAHA APP CON	OMAHA TOWER	GND CON	CLNC DEL
<b>120.4</b>	<b>120.1 354.05</b>	<b>132.1 256.9</b>	<b>121.9</b>	<b>119.9</b>



CATEGORY	A	B	C	D
RNP 0.30 DA	1425-1 446 (500-1)			

**AUTHORIZATION REQUIRED**

NC-2, 28 NOV 2024 to 26 DEC 2024

NC-2, 28 NOV 2024 to 26 DEC 2024