

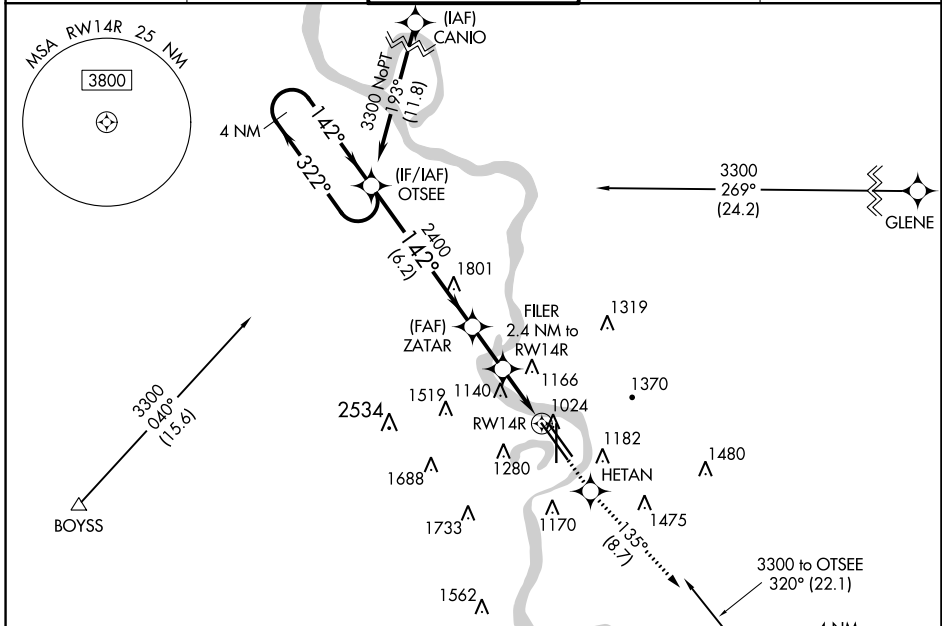
WAAS CH 56217 W14A	APP CRS 142°	Rwy Idg TDZE Apt Elev	9502 985 985
--	------------------------	-----------------------------	---

RNAV (GPS) Y RWY 14R

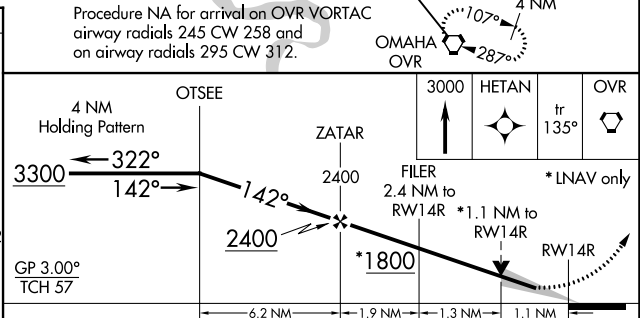
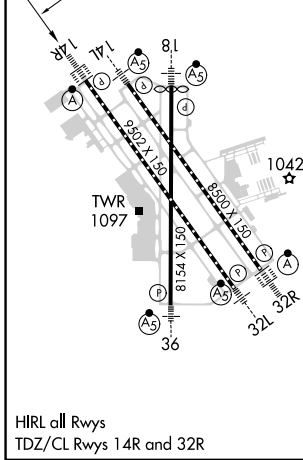
EPPLEY AIRFIELD (OMA)

RNP APCH.	ALSF-2	MISSED APPROACH: Climb to 3000 direct HETAN and on track 135° to OVR VORTAC and hold.
<p>▼ For uncompensated Baro-VNAV systems, LNAV/VNAV NA below -19°C (-2°F) or above 54°C (130°F). ▲ For inop ALS, increase LNAV/VNAV all Cats visibility to 1 3/8 SM.</p>		

D-ATIS 120.4	OMAHA APP CON 120.1 354.05	OMAHA TOWER 132.1 256.9	GND CON 121.9	CLNC DEL 119.9
------------------------	--------------------------------------	-----------------------------------	-------------------------	--------------------------



ELEV 985	D	TDZE 985
----------	----------	----------



CATEGORY	A	B	C	D
LPV DA	1185/18		200 (200-1/2)	
LNAV/VNAV DA	1465/50		480 (500-1)	
LNAV MDA	1380/24	395 (400-1/2)	1380/35	395 (400-3/8)
C CIRCLING	1660-1 675 (700-1)	1680-1 695 (700-1)	2000-3 1015 (1100-3)	2040-3 1055 (1100-3)

NC-2, 28 NOV 2024 to 26 DEC 2024

NC-2, 28 NOV 2024 to 26 DEC 2024