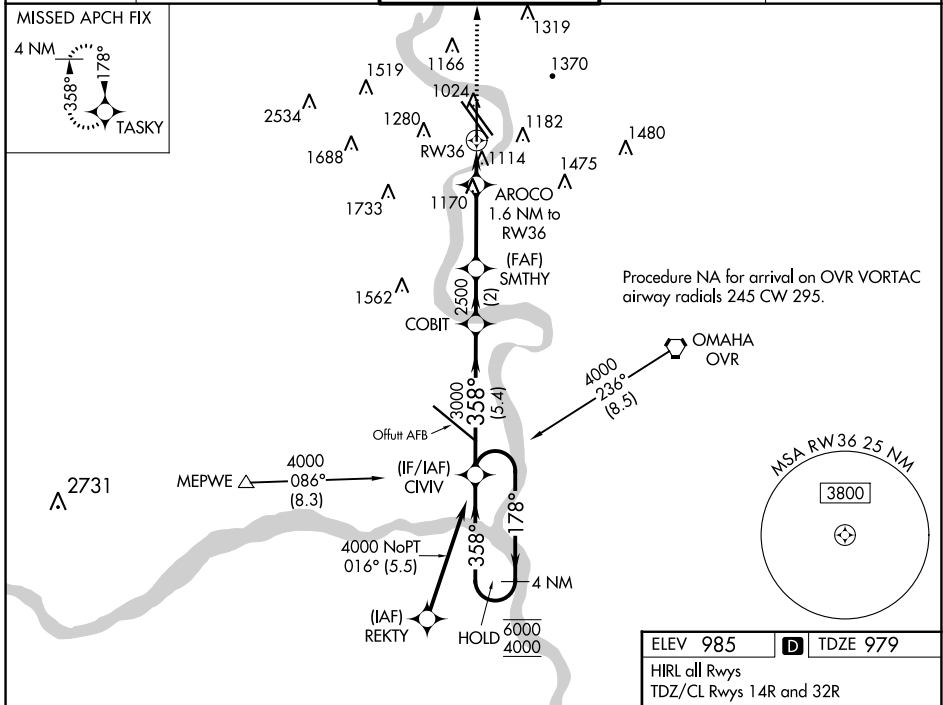


WAAS CH <b>70317</b> <b>W36A</b>	APP CRS <b>358°</b>	Rwy Idg <b>8153</b> TDZE <b>979</b> Apt Elev <b>985</b>
--	------------------------	---

# RNAV (GPS) Y RWY 36

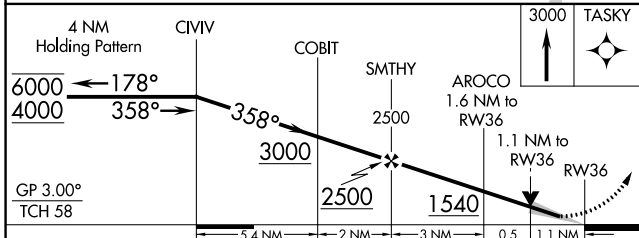
EPPLEY AIRFIELD (OMA)

RNP APCH - GPS.		MALSR	MISSED APPROACH: Climb to 3000 direct TASKY and hold.	
▼ For uncompensated Baro-VNAV systems, LNAV/VNAV NA below -19°C or above 54°C. For inop ALS, increase LNAV Cat C and D visibilities to 1½ SM. ▲				
D-ATIS <b>120.4</b>	OMAHA APP CON <b>120.1 354.05</b>	OMAHA TOWER <b>132.1 256.9</b>	GND CON <b>121.9</b>	CLNC DEL <b>119.9</b>

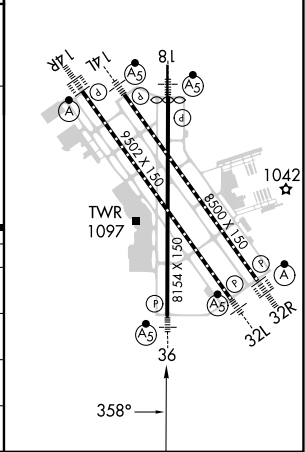


NC-2, 28 NOV 2024 to 26 DEC 2024

NC-2, 28 NOV 2024 to 26 DEC 2024



ELEV 985	<b>D</b> TDZE 979
HIRL all Rwys	
TDZ/CL Rwys 14R and 32R	



CATEGORY	A	B	C	D
LPV DA		1179-½	200 (200-½)	
LNAV/VNAV DA		1372-⅝	393 (400-⅝)	
LNAV MDA	1380-½	401 (400-½)	1380-¾	401 (400-¾)
<b>C</b> CIRCLING	1660-1 675 (700-1)	1680-1 695 (700-1)	2000-3 1015 (1100-3)	2040-3 1055 (1100-3)