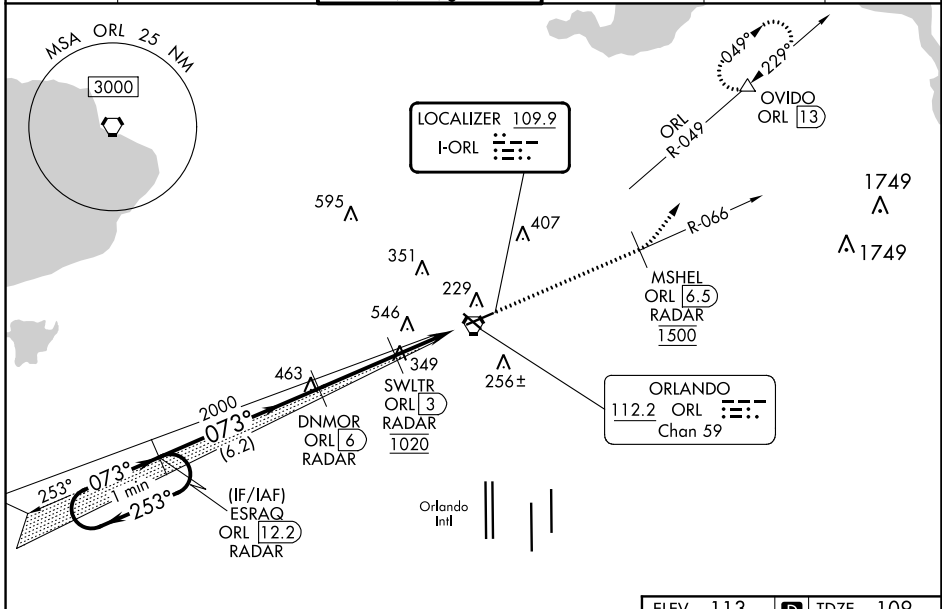


LOC I-ORL 109.9	APP CRS 073°	Rwy Idg 5604
		TDZE 109
		Apt Elev 113

ILS or LOC RWY 7

EXEC (ORL)

RADAR required for procedure entry. DME or RADAR required.		MISSED APPROACH: Climb on ORL VORTAC R-066 to cross MSHEL/ORL 6.5 DME/RADAR at 1500 then climbing left turn to 1600 on heading 020° and ORL VORTAC R-049 to OVIDO/ORL 13 DME and hold.			
⚠ Circling Rwy 31 NA at night. In minimum visibility conditions, bright lights on highway 1/2 mile south of airport may be mistaken for runway lights. For inop ALS, increase S-ILS 7 all Cats visibility to RVR 4500 and S-LOC 7 Cats A/B visibility to RVR 5500. Rwy 7 helicopter visibility reduction below 3/4 SM NA. Autopilot coupled approach NA below 320.	MALSR 				
ATIS 127.25	ORLANDO APP CON 124.8 351.9	EXECUTIVE TOWER ★ 118.7 (CTAF) 0 239.0	GND CON 121.4 239.0	CLNC DEL 128.45	UNICOM 122.95



SE-3, 28 NOV 2024 to 26 DEC 2024

SE-3, 28 NOV 2024 to 26 DEC 2024

ELEV 113		TDZE 109	
One Minute Holding Pattern ESRAQ ORL 12.2 RADAR 2000 ← 253° GS 3.00° TCH 52 2000 → 073°		DNMR ORL 6 RADAR 2000 SWLTR ORL 3 RADAR *1020 ORL VORTAC ORL 0.2	
ORL R-066 MSHEL ORL 6.5 RADAR 1500 hdg 020° ORL R-049 OVIDO ORL 13 1600 *LOC only.		178± 6025 X 100 6004 X 150 TWR 221 073°	
CATEGORY	A	B	C
S-ILS 7	391/40 282 (300-3/4)		
S-LOC 7	660/40	551 (600-3/4)	660/60 551 (600-1 1/4)
CIRCLING	660-1 547 (600-1)	680-1 567 (600-1)	860-2 1/4 747 (800-2 1/4)
			860-2 1/2 747 (800-2 1/2)
REIL Rws 13 and 31 HIRL Rws 7-25 and 13-31 FAF to MAP 5.8 NM			
Knots		Min:Sec	
60 90 120 150 180		5:48 3:52 2:54 2:19 1:56	