

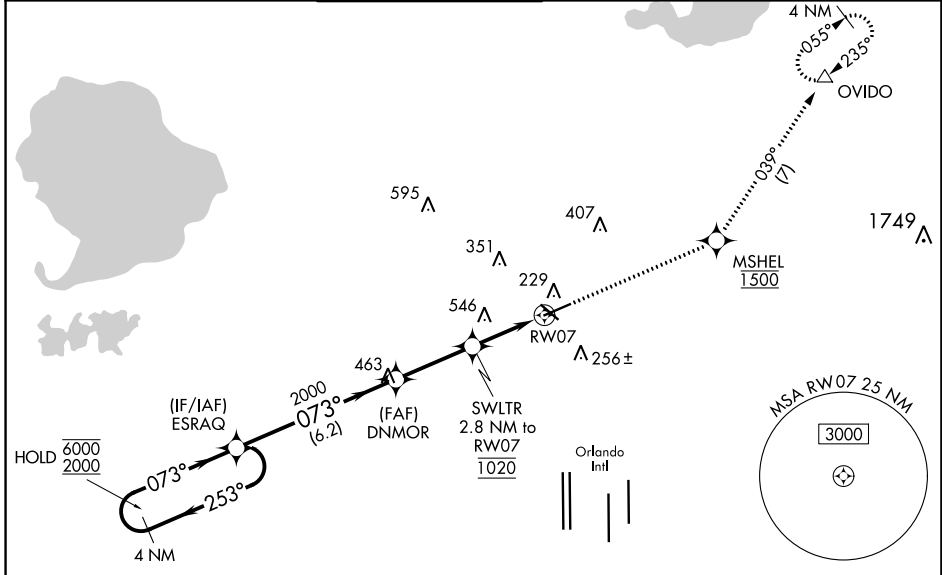
WAAS CH 70729 W07A	APP CRS 073°	Rwy Idg 5604 TDZE 109 Apt Elev 113
--	------------------------	---

RNAV (GPS) RWY 7

EXEC (ORL)

RNP APCH-GPS.	MALSR 	MISSED APPROACH: Climb to 1500 direct MSHEL, cross MSHEL at 1500, then climb to 1600 on track 039° to OVIDO and hold.
⚠ Circling Rwy 31 NA at night. Rwy 7 helicopter visibility reduction below 3/4 SM NA. ⚠ For uncompensated Baro-VNAV systems, LNAV/VNAV NA below 2°C or above 54°C. ⚠ For inop ALS, increase LPV all Cats visibility to RVR 4500, increase LNAV/VNAV all Cats visibility to RVR 5000, increase LNAV Cat A/B visibility to RVR 5500 and Cats C/D to 1 3/4 SM. In minimum visibility conditions, bright lights on highway 1/2 mile south of airport may be mistaken for runway lights.		

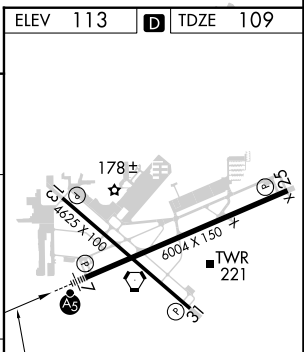
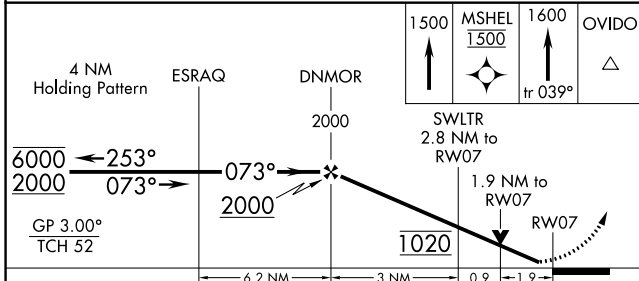
ATIS 127.25	ORLANDO APP CON 124.8 351.9	EXECUTIVE TOWER ★ 118.7 (CTAF) 0 239.0	GND CON 121.4 239.0	CLNC DEL 128.45	UNICOM 122.95
-----------------------	---------------------------------------	---	-------------------------------	---------------------------	-------------------------



SE-3, 28 NOV 2024 to 26 DEC 2024

SE-3, 28 NOV 2024 to 26 DEC 2024

ELEV 113	TDZE 109
----------	----------



CATEGORY	A	B	C	D
LPV DA		391/40	282 (300-3/4)	
LNAV/VNAV DA		447/40	338 (400-3/4)	
LNAV MDA	740/40	631 (700-3/4)	740-1 3/8	631 (700-1 3/8)
CIRCLING	740-1	627 (700-1)	860-2 1/4	860-2 1/2
			747 (800-2 1/4)	747 (800-2 1/2)

REIL Rwy 13 and 31
HIRL Rwy 7-25 and 13-31