

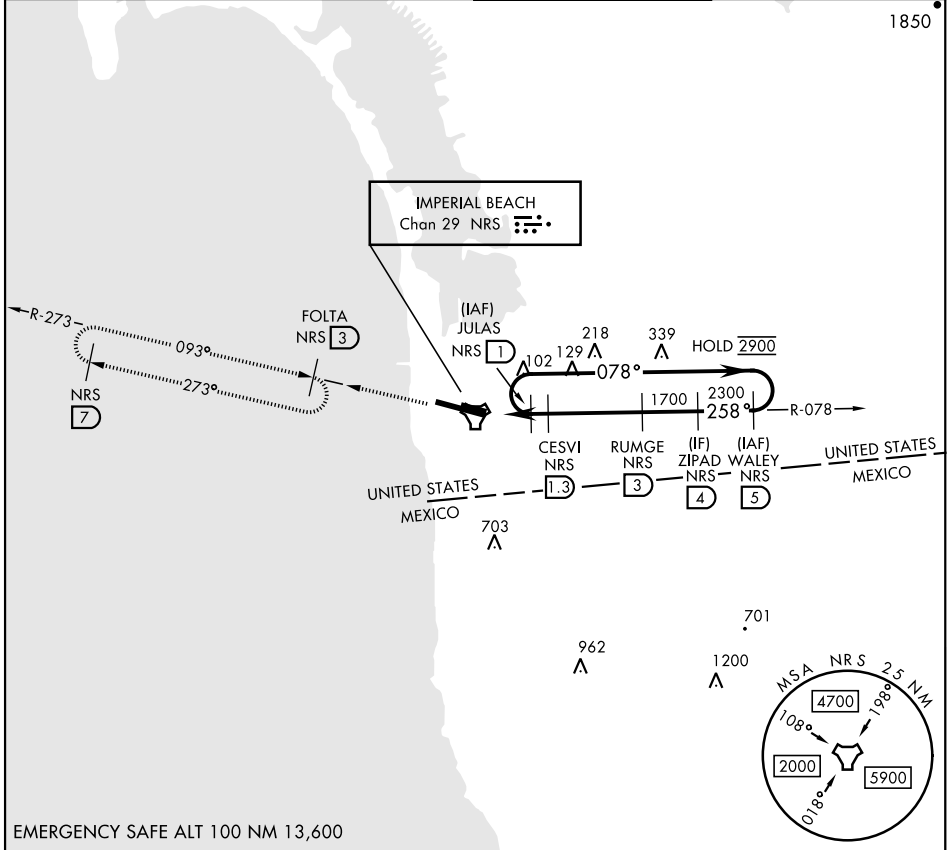
COPTER TACAN RWY 27

AL-307 [USN]

IMPERIAL BEACH NOLF (REAM FIELD) (KNRS)

TACAN Chan 29	APCH CRS 258°	Rwy Idg THRE Arpt Elev 4998 20 23
-------------------------	-------------------------	---

RADAR required.		MISSED APPROACH: Climb to 1800 on NRS TACAN R-078 to NRS, and R-273 to FOLTA. Continue climb in hold to 1800.	
▼ Max airspeed 90 KIAS.			
ATIS ★ /ASOS 276.2	SOCAL APP CON 125.15 317.55	IMPERIAL BEACH TOWER ★ 120.65 239.25	GND CON 285.575



EMERGENCY SAFE ALT 100 NM 13,600

<p>JULAS 1 078° →</p> <p>2900 ← 258°</p> <p>TACAN</p> <p>CISAV 0.5</p> <p>CESVI 1.3</p> <p>RUMGE 3</p> <p>ZIPAD 4</p> <p>WALEY 5</p> <p>1700</p> <p>2300</p> <p>2900</p> <p>0.8 NM</p> <p>1.7 NM</p>		<p>1800</p> <p>NRS R-078</p> <p>NRS R-273</p>	ELEV 23	THRE 20
<p>VDA RUMGE to thld</p> <p>5.35°</p> <p>TCH 50</p>				
CATEGORY	COPTER			
H-27	400-½ 377 (400-½)			
HIRL Rwy 9-27				

COPTER TACAN RWY 27

SW-3, 28 NOV 2024 to 26 DEC 2024

SW-3, 28 NOV 2024 to 26 DEC 2024