

HI-TACAN Y RWY 14L

TACAN PAM Chan 64	APCH CRS 130°	Rwy Ldg 10,008 TDZE 14 Arpt Elev 17
-----------------------------	-------------------------	--

[USAF]

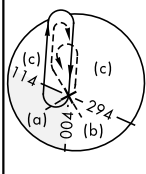
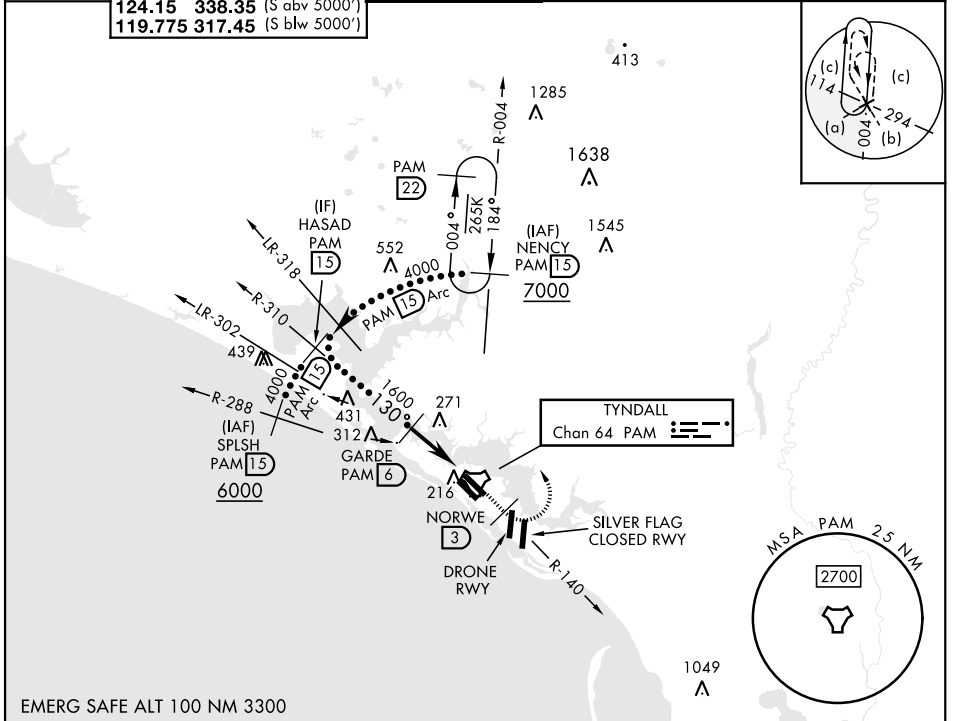
TYNDALL AFB (KPAM)

* When ALS inop, increase vis to 1½ miles.

 ALSF-1

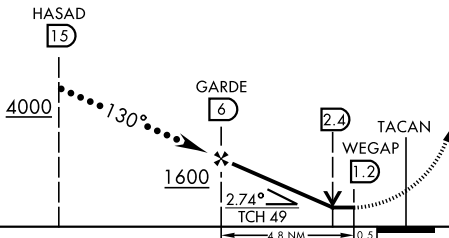

 MISSED APPROACH: Track outbound PAM TACAN R-140 to 3 DME (NORWE), then turn left to join PAM R-004 to 15 DME (NENCY) and hold. Maintain 3000.

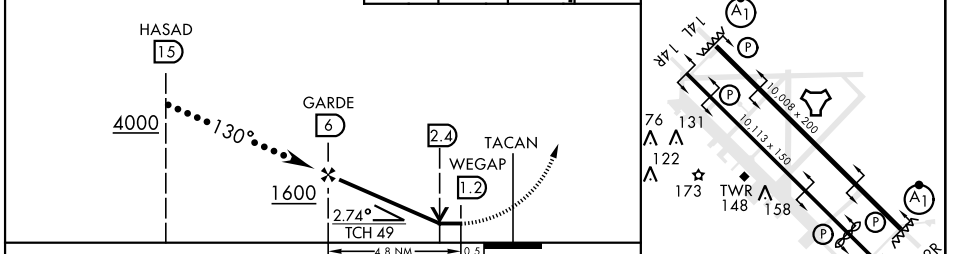
ATIS ★ 254.4	APP CON 125.2 392.1 (N abv 5000') 120.825 379.3 (N blw 5000') 124.15 338.35 (S abv 5000') 119.775 317.45 (S blw 5000')	TOWER ★ 133.95 263.15	GND CON 121.9 259.3	CLNC DEL 118.05 348.7	ASR/PAR
------------------------	--	--	--------------------------------------	--	---------



SE-3, 28 NOV 2024 to 26 DEC 2024

SE-3, 28 NOV 2024 to 26 DEC 2024

VGS1 and descent angles not coincident (VGS1 Angle 2.50/TCH 49). 	3000 PAM R-140 NORWE PAM 3 NENCY PAM 15 PAM R-004	ELEV 17 TDZE 14 HIRL all Rws Rwy 32L Ldg 9135'
---	--	---



CATEGORY	C	D	E
S-14L*	500/50	486 (500-1)	
CIRCLING	540-1½ 523 (600-1½)	580-2 563 (600-2)	620-2¼ 603 (700-2¼)

Recommend Rwy 14L-32R for apch end engagement of A-Gear.

HI-TACAN Y RWY 14L