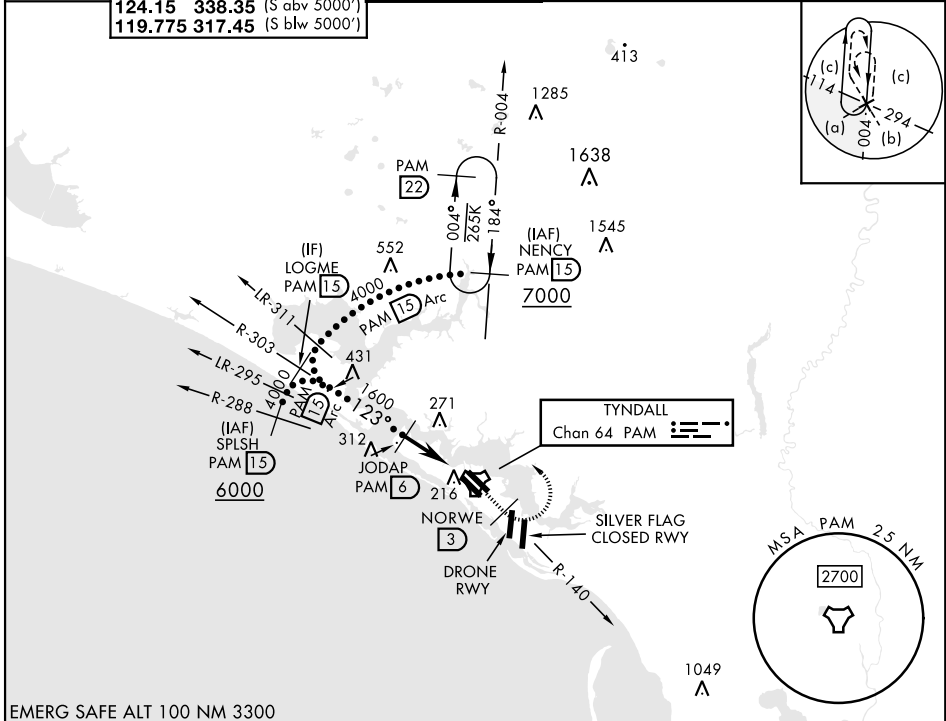


HI-TACAN Y RWY 14R

TACAN PAM Chan 64	APCH CRS 123°	Rwy Idg 10,113 TDZE 15 Arprt Elev 17	[USAF]	TYNDALL AFB (KPAM)
-----------------------------	-------------------------	---	--------	--------------------

MISSED APPROACH: Track outbound PAM TACAN R-140 to 3 DME (NORWE), then turn left to join PAM R-004 to 15 DME (NENCY) and hold. Maintain 3000.

ATIS ★ 254.4	APP CON 125.2 392.1 (N abv 5000') 120.825 379.3 (N blw 5000') 124.15 338.35 (S abv 5000') 119.775 317.45 (S blw 5000')	TOWER ★ 133.95 263.15	GND CON 121.9 259.3	CLNC DEL 118.05 348.7	ASR/PAR
------------------------	--	--	--------------------------------------	--	---------



EMERG SAFE ALT 100 NM 3300

	3000 PAM R-140	NORWE PAM (3)	NENCY PAM (15)	ELEV 17	TDZE 15
	VGSI and descent angles not coincident (VGSI Angle 2.50/TCH 36).			HIRL all Rwys Rwy 32L Idg 9135'	
	LOGME (15) 4000 → JODAP (6) 1600 → TACAN → SAATA (1.3)				
CATEGORY	C	D	E		
S-14R	480-1 $\frac{3}{8}$	465	(500-1 $\frac{3}{8}$)		
CIRCLING	540-1 $\frac{1}{2}$ 523 (600-1 $\frac{1}{2}$)	580-2 563 (600-2)	620-2 $\frac{1}{4}$ 603 (700-2 $\frac{1}{4}$)	Recommend Rwy 14L-32R for apch end engagement of A-Gear.	

HI-TACAN Y RWY 14R

SE-3, 28 NOV 2024 to 26 DEC 2024

SE-3, 28 NOV 2024 to 26 DEC 2024