

PATUXENT RIVER, MARYLAND

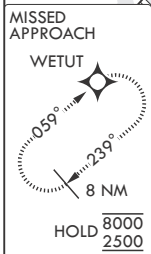
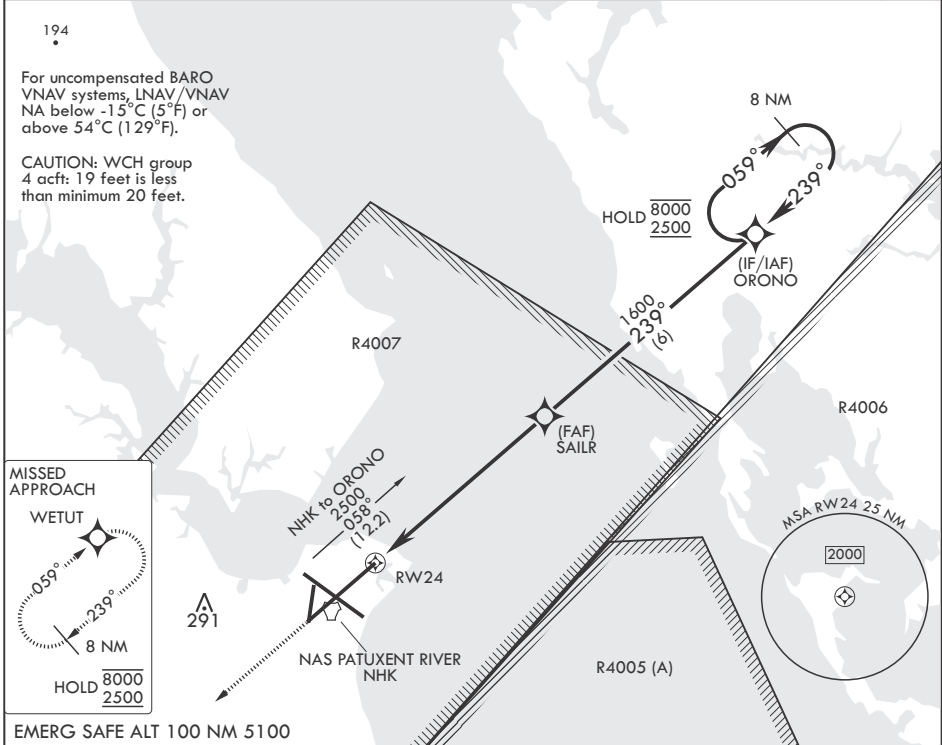
# RNAV (GPS) RWY 24

APCH CRS	Rwy Idg	11,799
239°	TDZE	20
	Arprt Elev	39

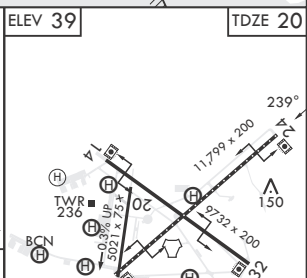
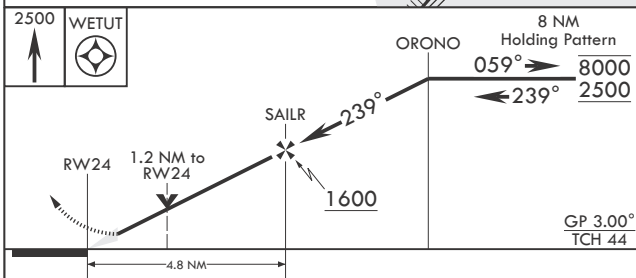
- (USN) PATUXENT RIVER NAS (TRAPNELL FLD) (KNHK)

RNP APCH	MISSED APPROACH: Climb to 2500 direct WETUT and hold.
----------	---

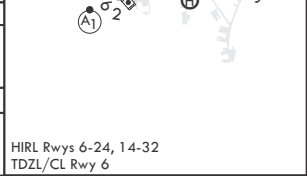
ATIS 322.425	APP CON/DEP CON* 121.0 250.3	TOWER 123.7 343.65	GND CON 120.6 336.4	CLNC DEL 135.2 316.125	ASR/PAR
-----------------	---------------------------------	-----------------------	------------------------	---------------------------	---------



EMERG SAFE ALT 100 NM 5100



CATEGORY	A	B	C	D	E
LNAV/VNAV DA	308-7/8 288 (300-7/8)	319-7/8 299 (300-7/8)	327-7/8 307 (300-7/8)	338-7/8	318 (300-7/8)
LNAV MDA	440-1	420 (500-1)	440-1 1/2	420	(500-1 1/2)
<b>C</b> CIRCLING	540-1 501 (600-1)	560-1 521 (600-1)	620-1 1/2 581 (600-1 1/2)	680-2 641 (700-2)	820-2 3/4 781 (800-2 3/4)



PATUXENT RIVER, MARYLAND

38°17'N - 76°25'W PATUXENT RIVER NAS (TRAPNELL FLD) (KNHK)

Amdt 3 07SEP23

# RNAV (GPS) RWY 24

NE-3, 28 NOV 2024 to 26 DEC 2024

NE-3, 28 NOV 2024 to 26 DEC 2024