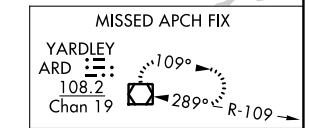
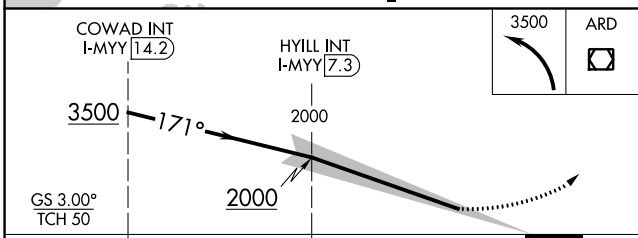
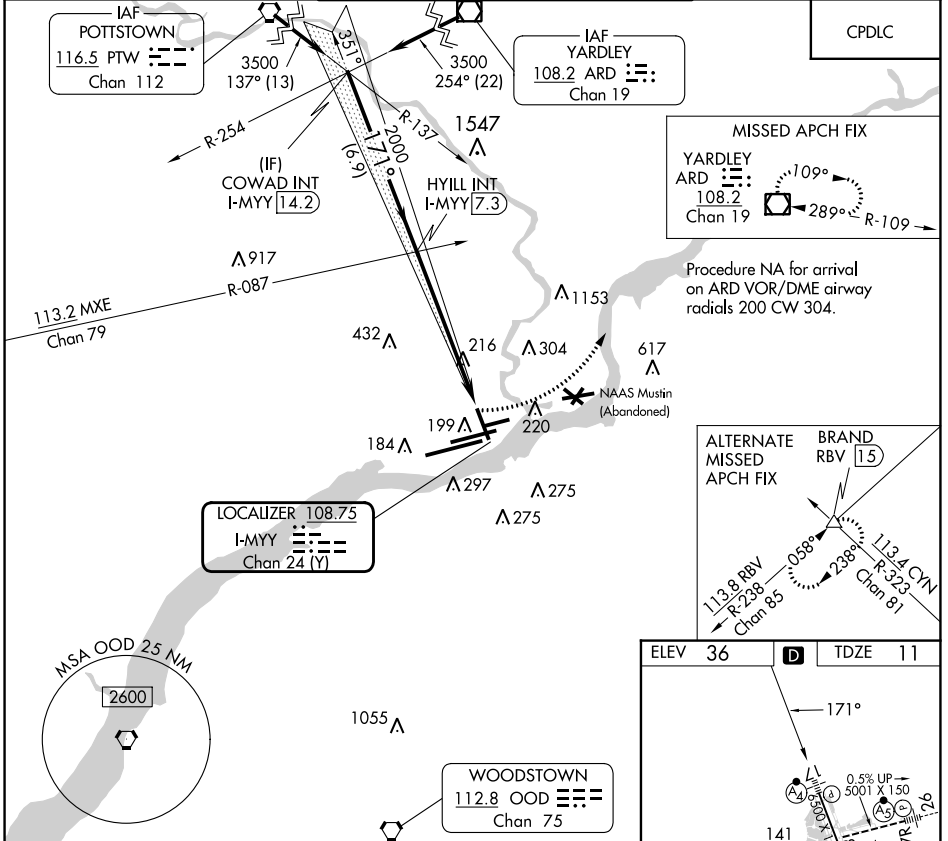


LOC/DME I-MYY 108.75 Chan 24 (Y)	APP CRS 171°	Rwy Idg TDZE Apt Elev	6500 11 36
--	------------------------	-----------------------------	---------------------------------------

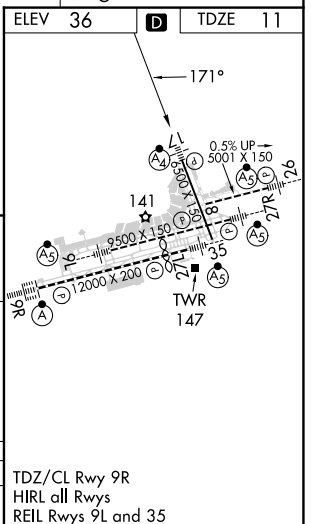
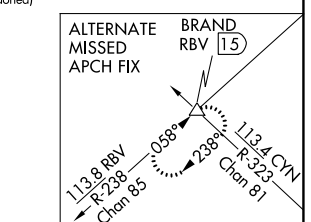
ILS V RWY 17 (CONVERGING)

PHILADELPHIA INTL (PHL)

RADAR required.		PHILADELPHIA TOWER		GND CON		CLNC DEL	
Simultaneous approach authorized. Rwy 17 helicopter visibility reduction below 3/4 SM NA.		118.5 327.05 135.1 327.05 (Rwys 9L/27R, 8/26 and 17/35) (Rwy 9R/27L)		121.9 348.6		118.85 348.6	
D-ATIS ARR 133.4 DEP 135.925		PHILADELPHIA APP CON 124.35 319.15		MALSF		CPDLC	



Procedure NA for arrival on ARD VOR/DME airway radials 200 CW 304.



CATEGORY	A	B	C	D
S-ILS 17		410/45	399 (400-7/8)	

ILS V RWY 17 (CONVERGING)

NE-4, 28 NOV 2024 to 26 DEC 2024

NE-4, 28 NOV 2024 to 26 DEC 2024