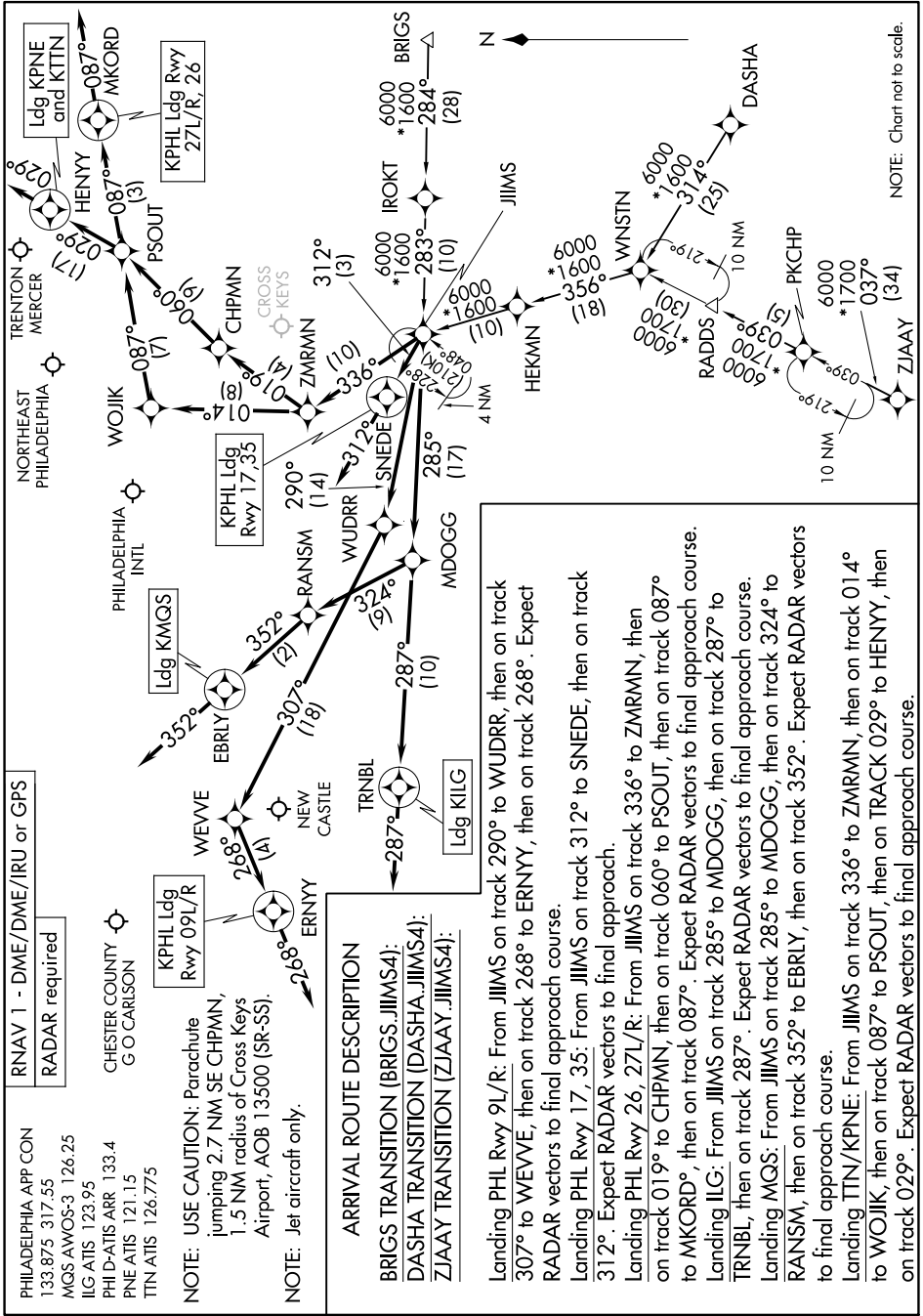


JIIMS FOUR ARRIVAL (RNAV)

PHILADELPHIA, PENNSYLVANIA

NE-4, 28 NOV 2024 to 26 DEC 2024



PHILADELPHIA APP CON
133.875 317.55
MGS AWOS-3 126.25
ILG ATIS 123.95
PHI D-ATIS ARR 133.4
PNE ATIS 121.15
TIN ATIS 126.775

RNAV 1 - DME/DME/IRU or GPS
RADAR required

CHESTER COUNTY
G O CARLSON

NOTE: USE CAUTION: Parachute jumping 2.7 NM SE CHPMN, 1.5 NM radius of Cross Keys Airport, AOB 13500 (SR-SS).
NOTE: Jet aircraft only.

ARRIVAL ROUTE DESCRIPTION
BRIGS TRANSITION (BRIGS.JIIMS4):
DASHA TRANSITION (DASHA.JIIMS4):
ZIAAY TRANSITION (ZIAAY.JIIMS4):

Landing PHL Rwy 9L/R: From JIIMS on track 290° to WUDRR, then on track 307° to WEVVE, then on track 268° to ERNYY, then on track 268°. Expect RADAR vectors to final approach course.
Landing PHL Rwy 17, 35: From JIIMS on track 312° to SNEDE, then on track 312°. Expect RADAR vectors to final approach.
Landing PHL Rwy 26, 27L/R: From JIIMS on track 336° to ZMRMN, then on track 019° to CHPMN, then on track 060° to PSOUT, then on track 087° to MKORD°, then on track 087°. Expect RADAR vectors to final approach course.
Landing ILG: From JIIMS on track 285° to MDOGG, then on track 287° to TRNBL, then on track 287°. Expect RADAR vectors to final approach course.
Landing MGS: From JIIMS on track 285° to MDOGG, then on track 324° to RANSM, then on track 352° to EBRLY, then on track 352°. Expect RADAR vectors to final approach course.
Landing TTN/KPNE: From JIIMS on track 336° to ZMRMN, then on track 014° to WOJJK, then on track 087° to PSOUT, then on TRACK 029° to HENNY, then on track 029°. Expect RADAR vectors to final approach course.

NOTE: Chart not to scale.

JIIMS FOUR ARRIVAL (RNAV)

PHILADELPHIA, PENNSYLVANIA

NE-4, 28 NOV 2024 to 26 DEC 2024