

# HI-TACAN RWY 21R

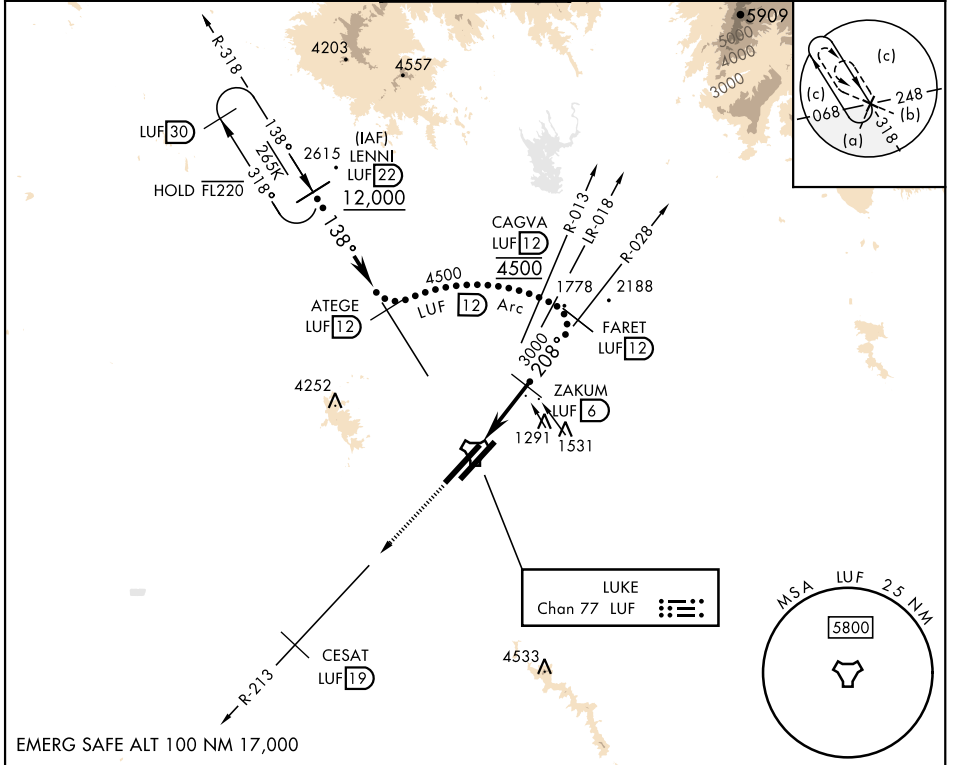
TACAN LUF Chan <b>77</b>	APCH CRS <b>208°</b>	Rwy ldg <b>10,000</b> TDZE <b>1084</b> Arprt Elev <b>1084</b>
--------------------------	----------------------	---

[USAF]

LUKE AFB (KLUF)

**MISSED APPROACH:** Climbing to 5000, intercept LUF TACAN R-213 to 19 DME (CESAT). Contact LUKE APP CON.

ATIS ★ <b>134.925 269.85</b>	APP CON ★ <b>118.15 363.125</b>	TOWER ★ <b>119.1 379.9</b>	GND CON ★ <b>133.175 335.8</b>	CLNC DEL ★ <b>126.25 273.475</b>
---------------------------------	------------------------------------	-------------------------------	-----------------------------------	-------------------------------------



SW-4, 28 NOV 2024 to 26 DEC 2024

SW-4, 28 NOV 2024 to 26 DEC 2024

EMERG SAFE ALT 100 NM 17,000

5000 LUF R-213	CESAT LUF 19	ELEV 1084	TDZE 1084
CATEGORY	C	D	E
S-21R	1640-1%	556	(600-1%)
CIRCLING	NOT AUTHORIZED		
HIRL all rwys			

# HI-TACAN RWY 21R