

BLYTHE FIVE ARRIVAL

AL-322 (FAA)

PHOENIX, ARIZONA

SW-4, 28 NOV 2024 to 26 DEC 2024

ARRIVAL ROUTE DESCRIPTION

BLYTHE TRANSITION (BLH.BLH5): From over BLH VORTAC on BLH R-082 to SALOM, then on GBN R-285 and IWA R-256 to ARLIN. Thence

PHOENIX SKY HARBOR INTL: Rwy 7L/R or 8: From over ARLIN, expect vectors to final approach course; Rwy 25L/R or 26: From over ARLIN, on IWA R-256 to TUKEE. Expect vectors to final approach course prior to TUKEE.
SATELLITE AIRPORTS: Expect vectors after passing SALOM.

LOST COMMUNICATIONS: After ARLIN, on IWA R-256 and PXR R-143 to PXR VORTAC.

SALOM

VERTICAL NAVIGATION PLANNING INFORMATION

Turboprop expect 17000
Turboprop landing KPHX expect vectors after SALOM.

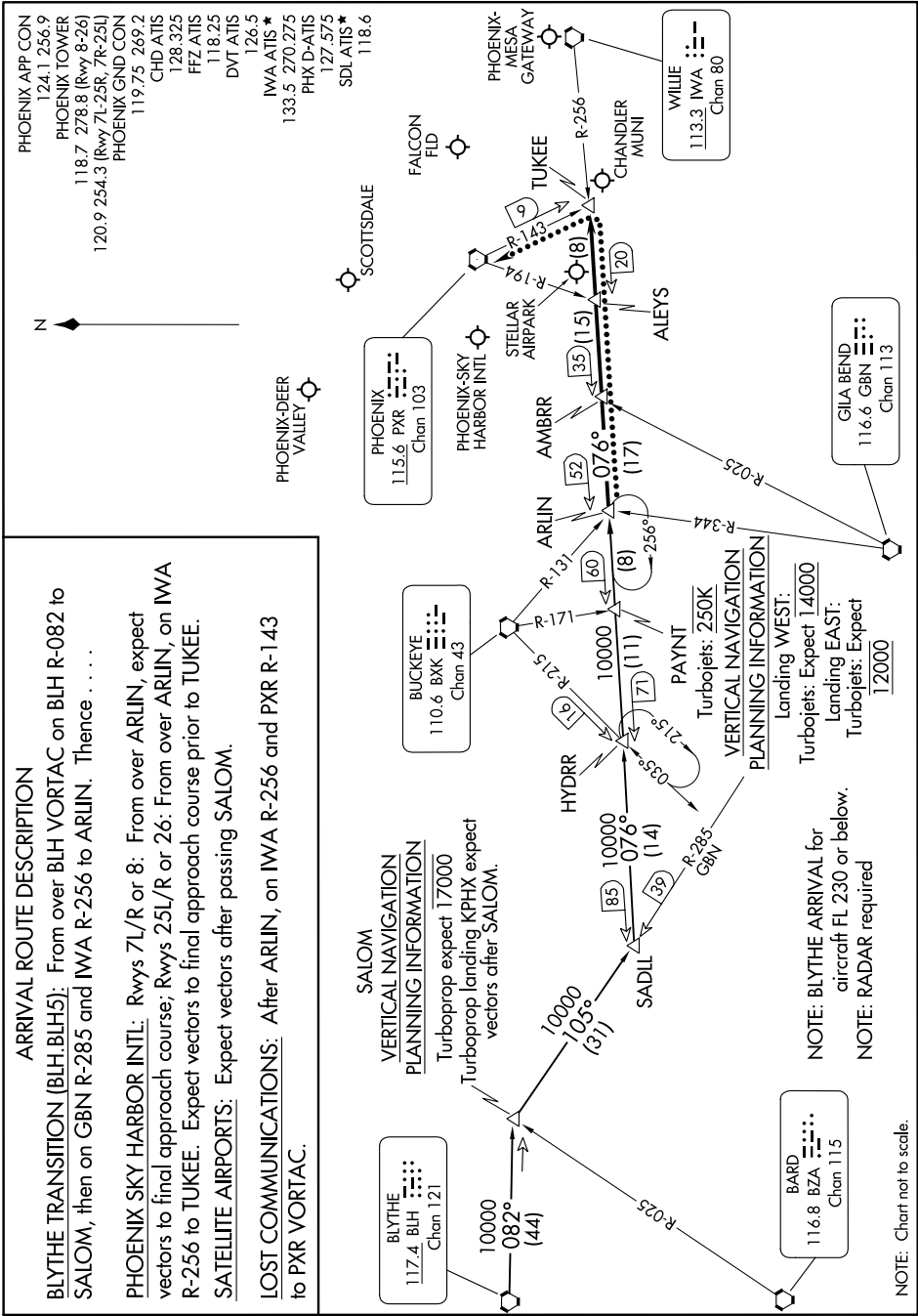
BLYTHE
117.4 BLH
Chan 121

BARD
116.8 BZA
Chan 115

NOTE: BLYTHE ARRIVAL for aircraft FL 230 or below.
NOTE: RADAR required

NOTE: Chart not to scale.

- PHOENIX APP CON 124.1 256.9
- PHOENIX TOWER 118.7 278.8 (Rwy 8-26)
- PHOENIX GND CON 119.75 269.2
- CHD ATIS 128.325
- FFZ ATIS 118.25
- DVT ATIS 126.5
- IWA ATIS 133.5 270.275
- PHX D-ATIS 127.575
- SDL ATIS 118.6



SW-4, 28 NOV 2024 to 26 DEC 2024

BLYTHE FIVE ARRIVAL

PHOENIX, ARIZONA