

WAAS CH <b>86808</b> <b>W28A</b>	APP CRS <b>278°</b>	Rwy Idg TDZE Apt Elev	<b>5801</b> <b>4650</b> <b>4697</b>
--	------------------------	-----------------------------	---

# RNAV (GPS) RWY 28

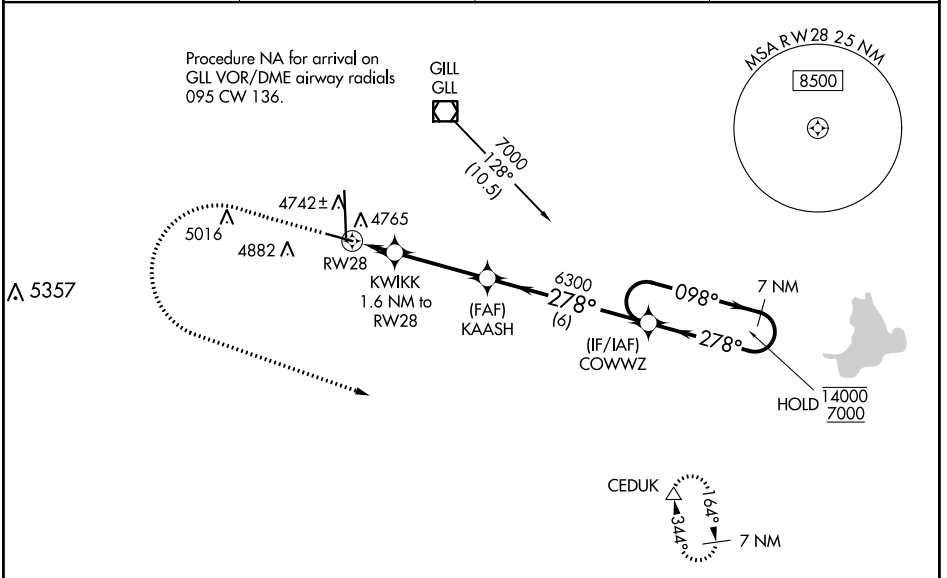
GREELEY-WELD COUNTY (GXY)

RNP APCH.

**⚠** Baro-VNAV NA when using Fort Collins/Loveland altimeter setting. For uncompensated Baro-VNAV systems, LNAV/VNAV NA below -24°C or above 54°C. When local altimeter setting not received, use Fort Collins/Loveland altimeter setting: increase LPV DA to 4935 feet and visibility ½ SM, LNAV/VNAV DA to 5061 feet and visibility ½ SM; increase all MDAs 100 feet and visibility Cats C and D ¼ SM.

MISSED APPROACH: Climb to 6300 then climbing left turn to 7000 direct CEDUK and hold.

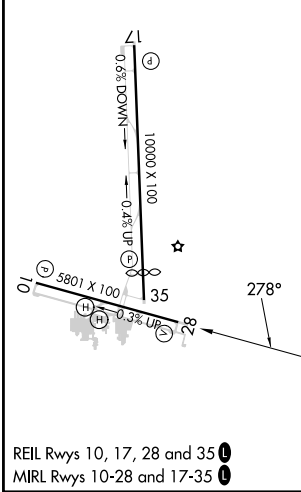
AWOS-3PT <b>135.175</b>	DENVER APP CON <b>134.85 251.125</b>	CLNC DEL <b>126.65</b>	UNICOM <b>122.7 (CTAF) 0</b>
----------------------------	---	---------------------------	---------------------------------



SW-1, 28 NOV 2024 to 26 DEC 2024

SW-1, 28 NOV 2024 to 26 DEC 2024

ELEV 4697	TDZE 4650
-----------	-----------



6300	7000	CEDUK	VGSi and RNAV glidepath not coincident (VGSi angle 3.00/TCH 27).		7 NM Holding Pattern
*LNAV only	*KWIKK 1.6 NM to RW28	KAASH	6300	COWWZ	14000 7000
RW28	5200	6300	278°	098°	278°
1.6 NM	3.5 NM	6 NM			GP 3.00° TCH 50
CATEGORY	A	B	C	D	
LPV DA	4850-¾		200 (200-¾)		
LNAV/VNAV DA	4976-1		326 (300-1)		
LNAV MDA	5080-1	430 (400-1)	5080-1¼	430 (400-1¼)	
<b>C</b> CIRCLING	5120-1 423 (500-1)	5200-1 503 (600-1)	5200-1½ 503 (600-1½)	5380-2¼ 683 (700-2¼)	