

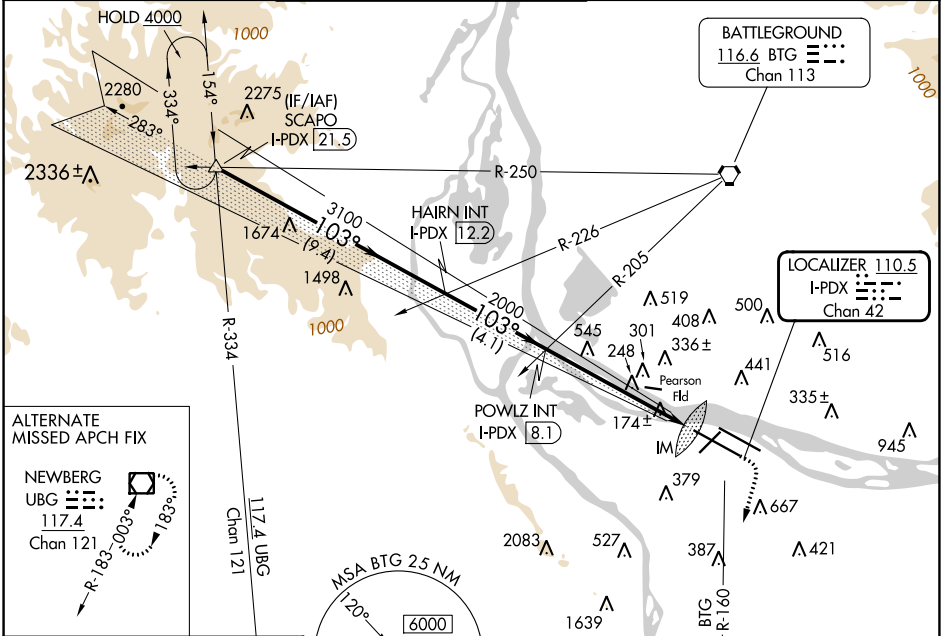
LOC/DME I-PDX 110.5 Chan 42	APP CRS 103°	Rwy Idg 11000 TDZE 24 Apt Elev 31
---	------------------------	--

ILS RWY 10R (CAT II & III)

PORTLAND INTL (PDX)

⚠ Simultaneous approach authorized. CAT II: RVR 1000 authorized with specific OPSPEC, MSPEC, or LOA approval and use of autoland or HUD to touchdown.	ALSF-2 	MISSED APPROACH: Climb to 1100 then climbing right turn to 5000 on BTG VORTAC R-160 to MULES/BTG 17.7 DME and hold, continue climb-in-hold to 5000.

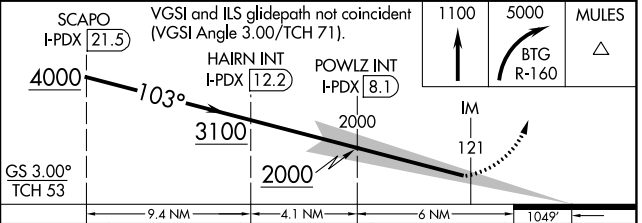
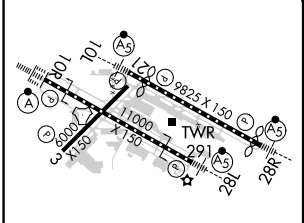
D-ATIS 128.35 269.9	PORTLAND APP CON 124.35 299.2	PORTLAND TOWER Rwy 10L-28R 118.7 257.8 Rwys 3-21, 10R-28L 123.775 251.125	GND CON 121.9 348.6	CLNC DEL 120.125 318.1	CPDLC
---	---	---	-------------------------------	----------------------------------	-------



ALTERNATE MISSED APCH FIX

NEWBERG UBG 117.4 Chan 121

ELEV 31	D	TDZE 24
---------	----------	---------



CATEGORY	A	B	C	D
S-ILS 10R	CAT II RA 107/12 100 DA 124			
S-ILS 10R	CAT III RVR 03			

CATEGORY II & III ILS - SPECIAL AIRCREW & AIRCRAFT CERTIFICATION REQUIRED

NW-1, 28 NOV 2024 to 26 DEC 2024

NW-1, 28 NOV 2024 to 26 DEC 2024