

LOC/DME I-VDG 111.3 Chan 50	APP CRS 103°	Rwy Idg TDZE Apt Elev	8535 30 31
---	------------------------	-----------------------------	---------------------------------------

ILS or LOC RWY 10L

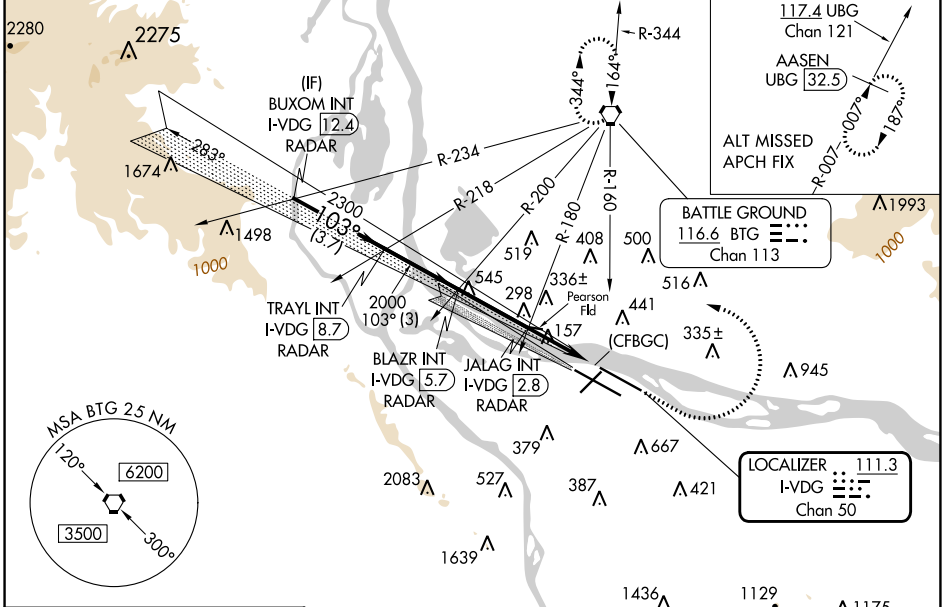
PORTLAND INTL (PDX)

⚠ Simultaneous approach authorized with Rwy 10R.
⚠ For inoperative MALS/R, increase S-ILS visibility all Cats to RVR 4500.
 S-LOC Cat E visibility to RVR 6000. RADAR or DME required.

MALS/R

MISSED APPROACH: Climb to 800 then climbing left turn to 4200 on BTG VORTAC R-160 to BTG VORTAC and hold, continue climb-in-hold to 4200.

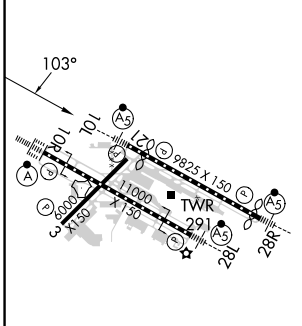
D-ATIS 128.35 269.9	PORTLAND APP CON 124.35 299.2	PORTLAND TOWER Rwy 10L-28R 118.7 257.8	Rwys 3-21, 10R-28L 123.775 251.125	GND CON 121.9 348.6	CLNC DEL 120.125 318.1	CPDLC
---	---	---	--	-------------------------------	----------------------------------	-------



NW-1, 28 NOV 2024 to 26 DEC 2024

NW-1, 28 NOV 2024 to 26 DEC 2024

ELEV 31	D	TDZE 30
---------	----------	---------



REIL Rwys 3 and 21
 TDZ/CL Rwy 10R
 MIRL Rwy 3-21
 HIRL Rwys 10L-28R and 10R-28L
 FAF to MAP 5.6 NM

Knots	60	90	120	150	180
Min:Sec	5:36	3:44	2:48	2:14	1:52

RADAR REQUIRED

BUXOM INT I-VDG 12.4 RADAR	TRAYL INT I-VDG 8.7 RADAR	BLAZR INT I-VDG 5.7 RADAR	JALAG INT I-VDG 2.8 RADAR	BTG
3000	2300	2000	*1100	800
GS 3.00° TCH 49	3.7 NM	3 NM	2.8 NM	2.7 NM
CATEGORY	A	B	C	D
S-ILS 10L	293/24 263 (300-½)			
S-LOC 10L	420/24 390 (400-½)		420/35 390 (400-⅝)	
C CIRCLING	720-1 689 (700-1)	760-1 729 (800-1)	1060-3 1029 (1100-3)	1140-3 1109 (1200-3)