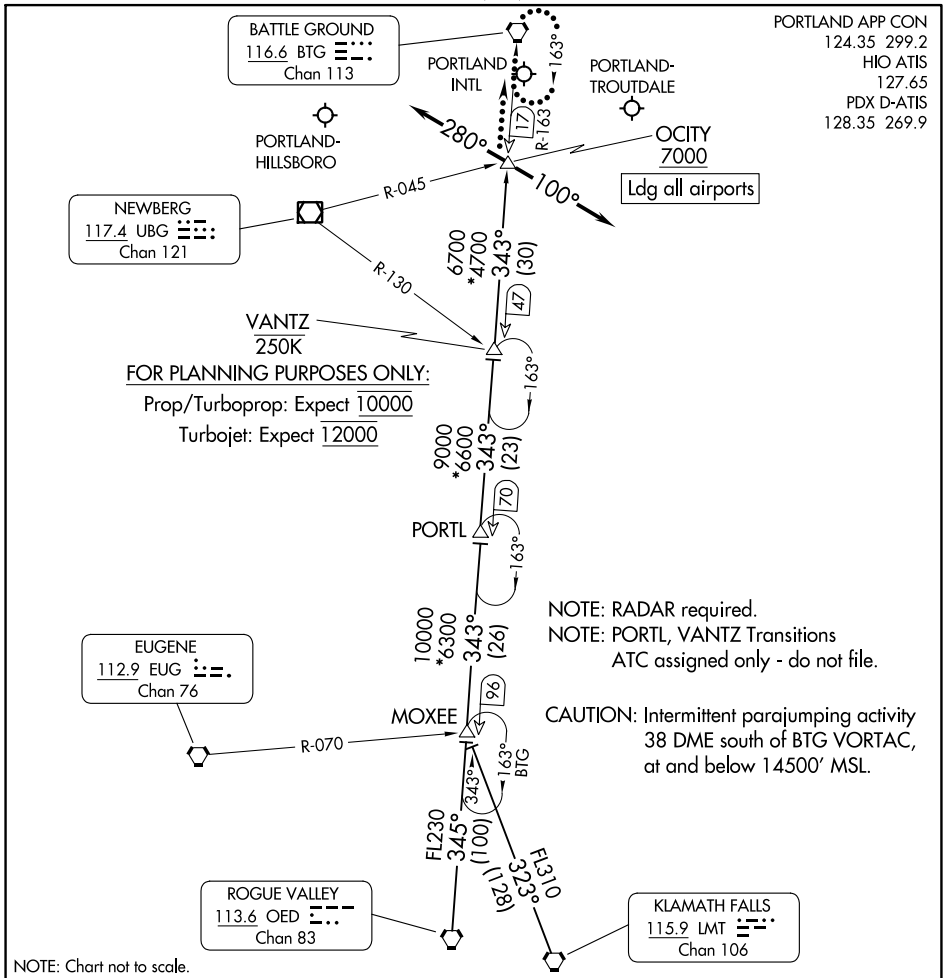


# OCITY THREE ARRIVAL



**NOTE:** RADAR required.  
NOTE: PORTL, VANTZ Transitions  
ATC assigned only - do not file.

**CAUTION:** Intermittent parajumping activity  
38 DME south of BTG VORTAC,  
at and below 14500' MSL.

## ARRIVAL ROUTE DESCRIPTION

- KLAMATH FALLS TRANSITION (LMT.OCITY3):** From over LMT VORTAC on LMT R-323 to MOXEE, then on BTG R-163 to OCITY. Thence. . .
- MOXEE TRANSITION (MOXEE.OCITY3):** From over MOXEE on BTG R-163 to OCITY. Thence. . .
- ROGUE VALLEY TRANSITION (OED.OCITY3):** From over OED VORTAC on OED R-345 to MOXEE, then on BTG R-163 to OCITY. Thence. . .
- PORTL TRANSITION (PORTL.OCITY3):** From over PORTL on BTG R -163 to OCITY. Thence. . .
- VANTZ TRANSITION (VANTZ.OCITY3):** From over VANTZ on BTG R-163 to OCITY. Thence. . .
- LANDING EAST:** From OCITY heading 280°, expect RADAR vectors to final approach course.
- LANDING WEST:** From OCITY heading 100°, expect RADAR vectors to final approach course.
- LOST COMMUNICATIONS:** After OCITY, proceed direct BTG VORTAC and hold.

# OCITY THREE ARRIVAL

NW-1, 28 NOV 2024 to 26 DEC 2024

NW-1, 28 NOV 2024 to 26 DEC 2024