

(TMBRS.TMBRS3) 24305

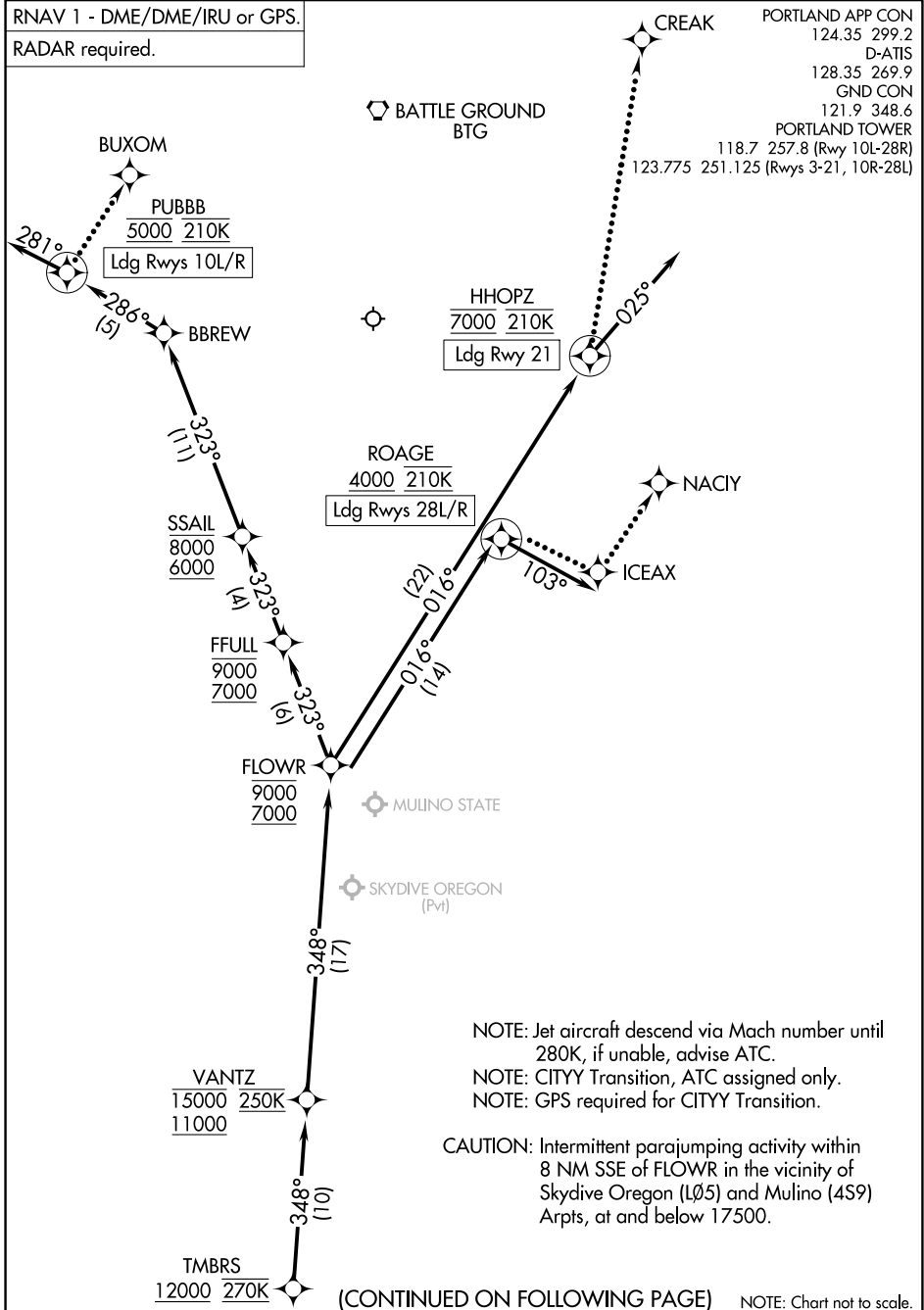
TMBRS THREE ARRIVAL (RNAV) Arrival Routes

AL-330 (FAA)

PORTLAND INTL (PDX)

PORTLAND, OREGON

RNAV 1 - DME/DME/IRU or GPS.
RADAR required.



NW-1, 28 NOV 2024 to 26 DEC 2024

NW-1, 28 NOV 2024 to 26 DEC 2024

NOTE: Jet aircraft descend via Mach number until 280K, if unable, advise ATC.
 NOTE: CITYY Transition, ATC assigned only.
 NOTE: GPS required for CITYY Transition.

CAUTION: Intermittent parajumping activity within 8 NM SSE of FLOWR in the vicinity of Skydive Oregon (LØ5) and Mulino (459) Arpts, at and below 17500.

(CONTINUED ON FOLLOWING PAGE) NOTE: Chart not to scale.

TMBRS THREE ARRIVAL (RNAV) Arrival Routes

(TMBRS.TMBRS3) 31OCT24

PORTLAND, OREGON
PORTLAND INTL (PDX)