

HI-ILS or LOC Z RWY 15L

LOC I-TRT 109.9	APCH CRS 145°	Rwy ldg TDZE 8351 742 Arprt Elev 761	[USAF]	RANDOLPH AFB (KRND)
---------------------------	-------------------------	---	--------	---------------------

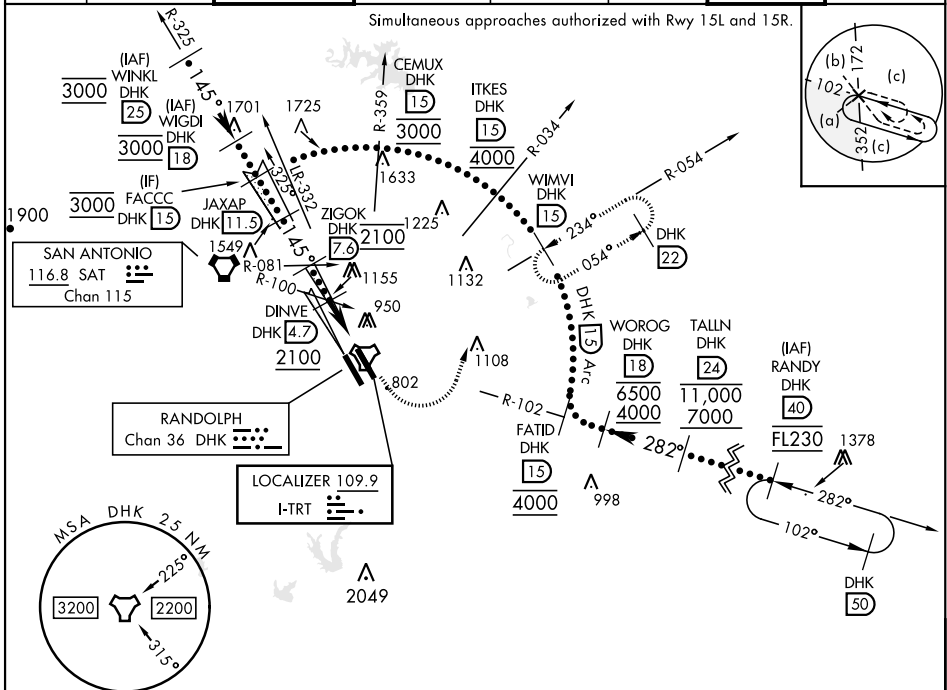
RADAR or DME required

* When ALS inop, increase CAT CDE vis to 1 1/2 miles.
** Circling NA SW of Rwy 15L-33R.

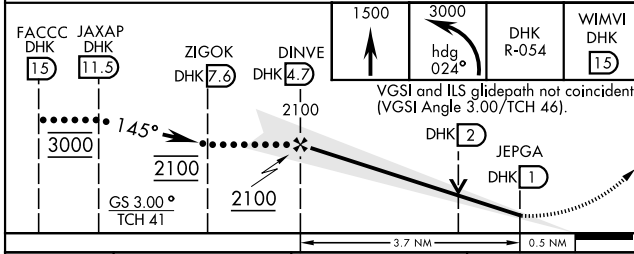
ALSF-1
A1

MISSED APPROACH: Climb to 1500, then climbing left turn heading 024° to 3000, intercept DHK TACAN R-054 to WIMVI and hold.

ATIS ★ 290.525	SAN ANTONIO APP CON 128.05 318.1	TOWER ★ 128.25 294.7	GND CON 119.65 275.8	CLNC DEL (RWY 15L-33R) 338.35	HANGOVER ATIS ★ 327.8	HANGOVER TOWER ★ 120.5 291.1	HANGOVER GND CON 124.75 353.75
--------------------------	--	--------------------------------	--------------------------------	---	---------------------------------	--	--



EMERG SAFE ALT 100 NM 4100



ELEV 761	TDZE 742
HIRL all rwys ALS Rwy 15L std len 2100'	
FAF to MAP 3.7 NM	
Knots	120 140 160 180 200
Min:Sec	1:51 1:35 1:23 1:14 1:07

CATEGORY	C	D	E
S-ILS 15L	942/40	200	(200-34)
S-LOC 15L*	1260-1 1/2	518	(500-1 1/4)
CIRCLING**	1260-1 1/2 499 (500-1 1/2)	1800-3	1039 (1100-3)

HI-ILS or LOC Z RWY 15L

SC-3, 28 NOV 2024 to 26 DEC 2024

SC-3, 28 NOV 2024 to 26 DEC 2024