

# HI-TACAN B

TACAN DHK Chan <b>36</b>	APCH CRS <b>326°</b>	Rwy ldg TDZE Arprt Elev <b>N/A</b> <b>N/A</b> <b>761</b>	[USAF]	RANDOLPH AFB (KRND)
-----------------------------	-------------------------	--	--------	---------------------

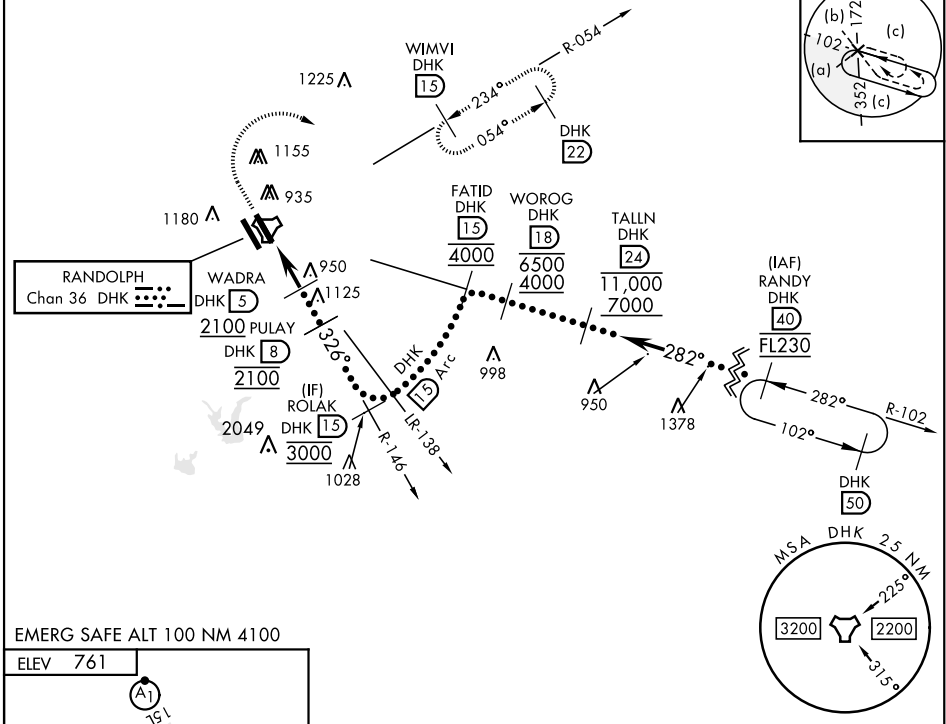
RADAR required for missed approach monitoring

\* Circling not authorized SW of Rwy 15L-33R.

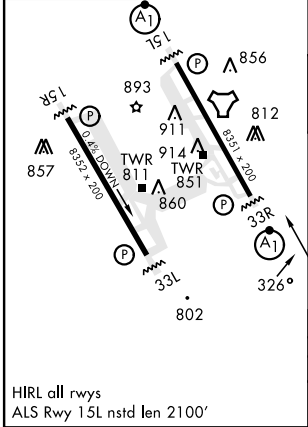
MISSED APPROACH: Track 327° to 1500, then climbing right turn heading 084° to 3000. Intercept DHK TACAN R-054 direct WIMVI and hold.

ATIS ★ <b>290.525</b>	SAN ANTONIO APP CON <b>128.05 318.1</b>	TOWER ★ <b>128.25 294.7</b>	GND CON <b>119.65 275.8</b>	CLNC DEL (RWY 15L-33R) <b>338.35</b>	HANGOVER ATIS ★ <b>327.8</b>	HANGOVER TOWER ★ <b>120.5 291.1</b>	HANGOVER GND CON <b>124.75</b> <b>353.75</b>
--------------------------	--	--------------------------------	--------------------------------	---	---------------------------------	--	--

•1585



EMERG SAFE ALT 100 NM 4100  
ELEV 761



1500	3000	DHK R-054	WIMVI DHK 15
tr 327°	hdg 084°		
CATEGORY	C	D	E
CIRCLING*	1260-1½ 499 (500-1½)	1800-3	1039 (1100-3)

# HI-TACAN B

SC-3, 28 NOV 2024 TO 26 DEC 2024

SC-3, 28 NOV 2024 TO 26 DEC 2024