

UNIVERSAL CITY, TEXAS

RNAV (GPS) RWY 15L

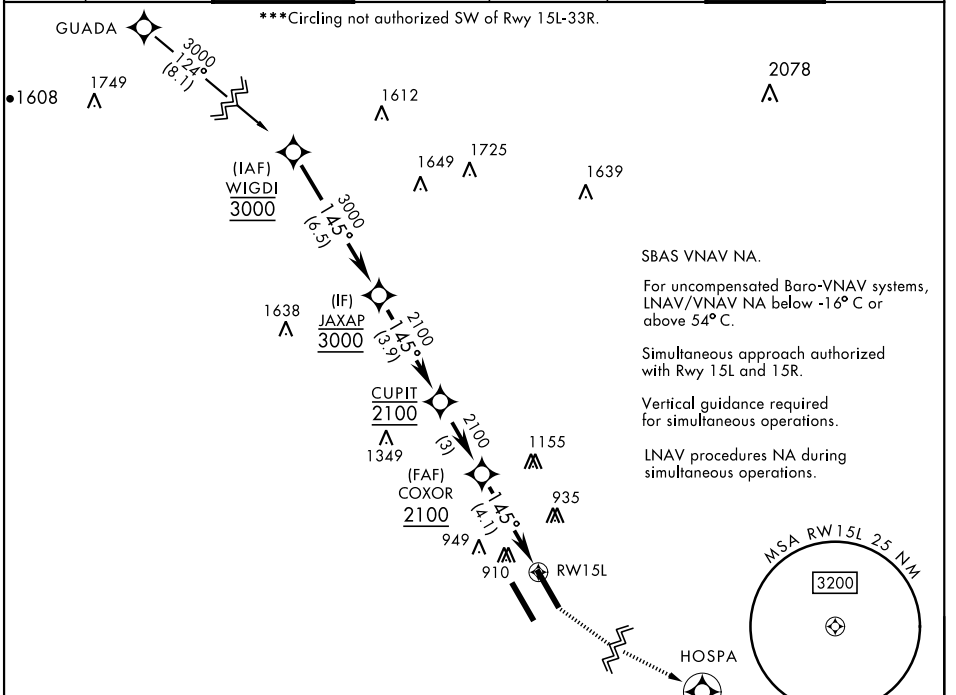
APCH CRS	Rwy Idg	8351
145°	TDZE	742
	Arpt Elev	761

[USAF]

RANDOLPH AFB (KRND)

RNP APCH - GPS	ALSF-1 	MISSED APPROACH: Climb to 1500, then climbing left turn to 3000 direct HOSPA. Expect ATC instructions.
----------------	------------	--

ATIS ★	SAN ANTONIO APP CON	TOWER ★	GND CON	CLNC DEL (RWY 15L-33R)	HANGOVER ATIS ★	HANGOVER TOWER ★	HANGOVER GND CON
290.525	128.05 318.1	128.25 294.7	119.65 275.8	338.35	327.8	120.5 291.1	124.75 353.75



EMERG SAFE ALT 100 NM 4100

					ELEV 761	TDZE 742
CATEGORY	A	B	C	D	E	
LNAV/VNAV DA *	1043/40 301 (300-¾)	1054/40 312 (300-¾)	1062/40 320 (400-¾)	1073/40 331 (400-¾)		
LNAV MDA**	1260/40 518 (500-¾)		1260-1¼ 499 (500-1½)	518 (500-1¼)		
CIRCLING ***	1260-1	499 (500-1)	1260-1½ 499 (500-1½)	1800-3	1039 (1100-3)	HIRL all rwys ALS Rwy 15L nstd len 2100'

UNIVERSAL CITY, TEXAS

29°32'N-98°17'W

RANDOLPH AFB (KRND)

Amtd 4 28DEC23

RNAV (GPS) RWY 15L

SC-3, 28 NOV 2024 to 26 DEC 2024

SC-3, 28 NOV 2024 to 26 DEC 2024