

RNAV (GPS) RWY 33L

APCH CRS 325°	Rwy Idg TDZE Arprt Elev 8352 733 761
-------------------------	--

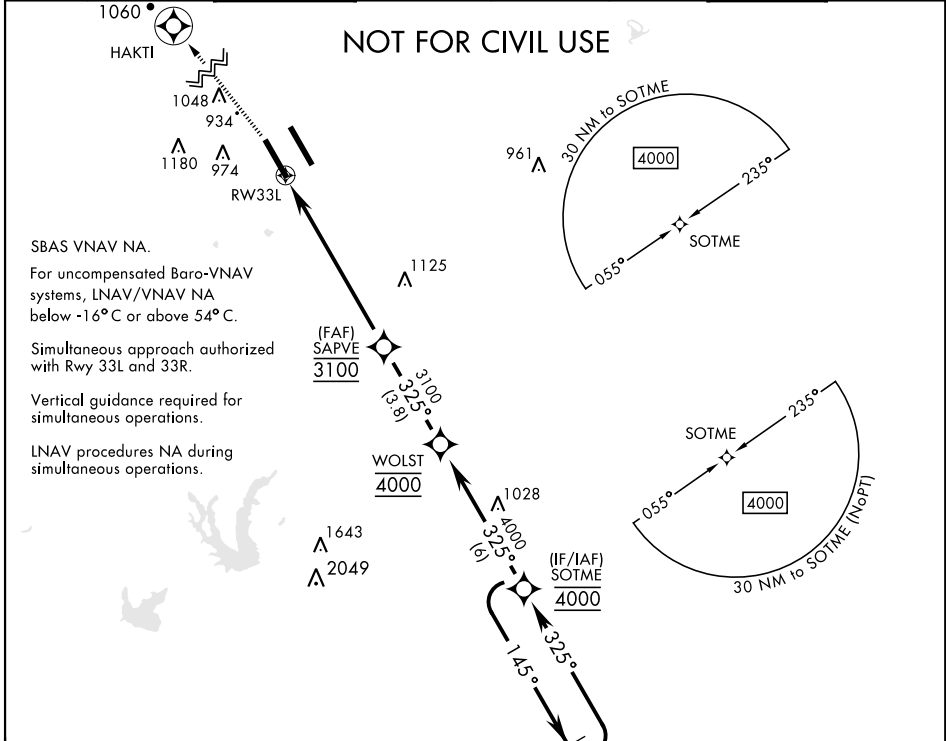
[USAF]

RANDOLPH AFB (KRND)

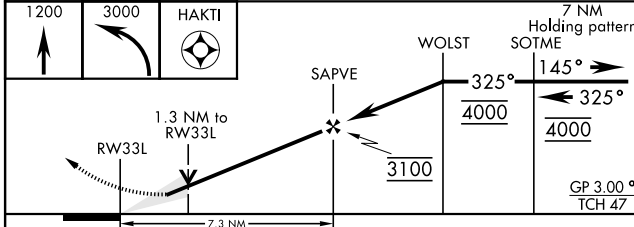
RNP APCH - GPS
* Circling not authorized NE of Rwy 15R-33L.

MISSED APPROACH: Climbing to 1200, then climbing left turn to 3000 direct HAKTI. Expect ATC instructions.

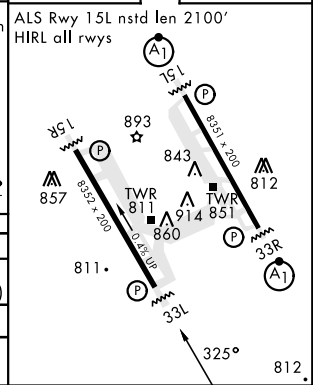
ATIS ★ 290.525	SAN ANTONIO APP CON 128.05 318.1	TOWER ★ 128.25 294.7	GND CON 119.65 275.8	CLNC DEL (RWY 15L-33R) 338.35	HANGOVER ATIS ★ 327.8	HANGOVER TOWER ★ 120.5 291.1	HANGOVER GND CON 124.75 353.75
--------------------------	--	--------------------------------	--------------------------------	---	---------------------------------	--	--



EMERG SAFE ALT 100 NM 4100



ELEV 761	TDZE 733
----------	----------



CATEGORY	A	B	C	D	E
LNAV/VNAV DA	983/40	250	(300-¾)	992/40 259 (300-¾)	1030/45 297 (300-¾)
LNAV MDA	1180/55	447 (500-1)	1180-1¾	447 (500-1¾)	
CIRCLING*	1240-1 479 (500-1)	1280-1 519 (600-1)	1500-2 739 (800-2)	1800-3	1039 (1100-3)

RNAV (GPS) RWY 33L

SC-3, 28 NOV 2024 to 26 DEC 2024

SC-3, 28 NOV 2024 to 26 DEC 2024