

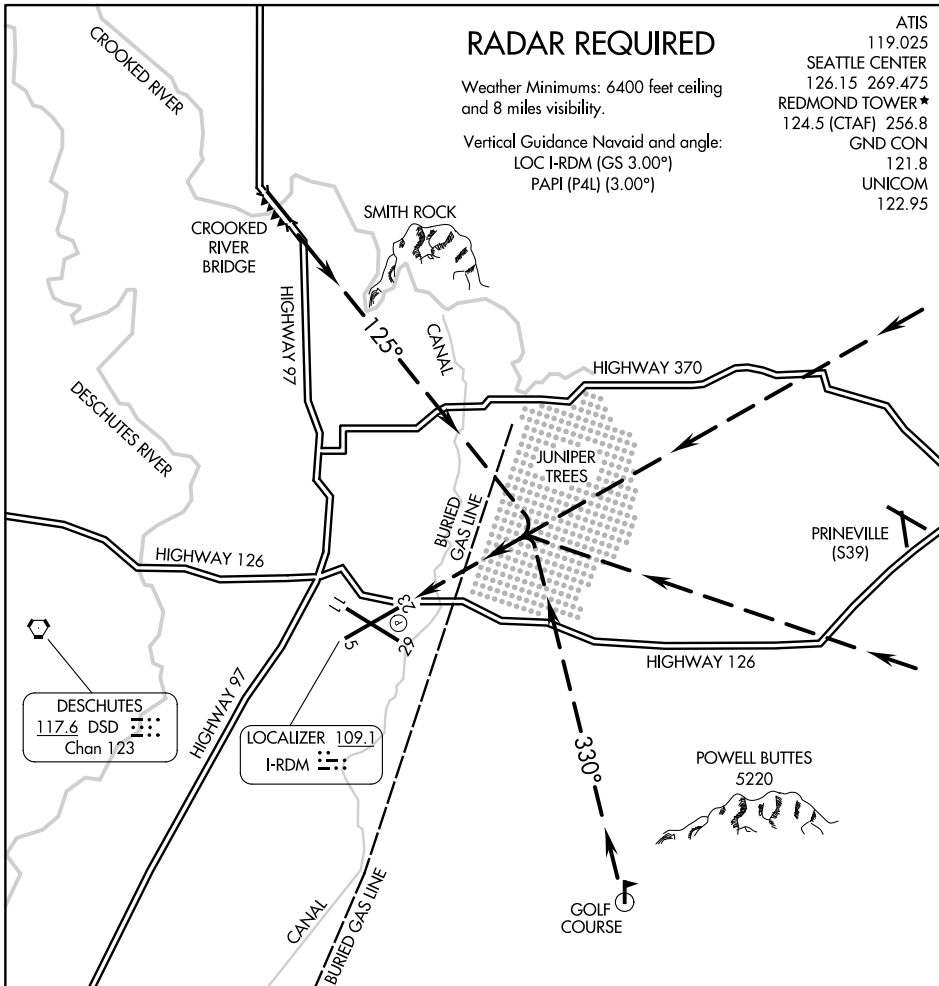
JUNIPER VISUAL RWY 23

RADAR REQUIRED

Weather Minimums: 6400 feet ceiling and 8 miles visibility.

Vertical Guidance Navaid and angle:
LOC I-RDM (GS 3.00°)
PAPI (P4L) (3.00°)

ATIS	119.025
SEATTLE CENTER	126.15 269.475
REDMOND TOWER *	124.5 (CTAF) 256.8
GND CON	121.8
UNICOM	122.95



NW-1, 28 NOV 2024 to 26 DEC 2024

NW-1, 28 NOV 2024 to 26 DEC 2024

DESCHUTES
117.6 DSD
Chan 123

LOCALIZER 109.1
I-RDM

1 NM	2	3	4	5	6	7	8	9	10	11	12	13	14	15	16	17	18
------	---	---	---	---	---	---	---	---	----	----	----	----	----	----	----	----	----

JUNIPER VISUAL APPROACH RWY 23
PROCEDURE NOT AUTHORIZED AT NIGHT

JUNIPER VISUAL RWY 23