

APP CRS	Rwy Idg	7031
226°	TDZE	3065
	Apt Elev	3080

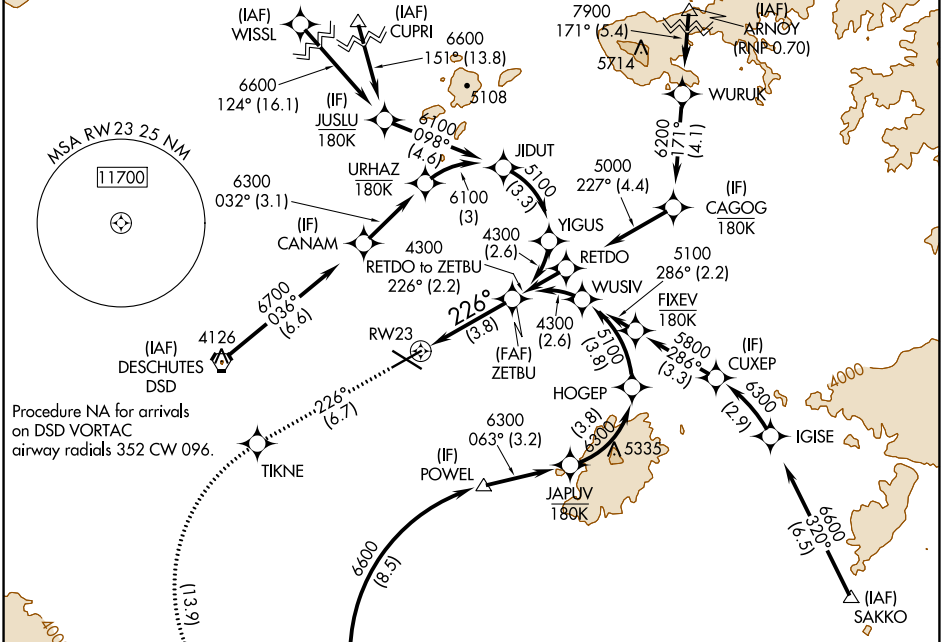
RNAV (RNP) Z RWY 23

ROBERTS FLD (RDM)

V For uncompensated Baro-VNAV systems, procedure NA below -20°C (-4°F) or above 53°C (129°F). For inop MALS, increase RNP 0.10 all Cats visibility to ¾ mile. RF required. GPS required.

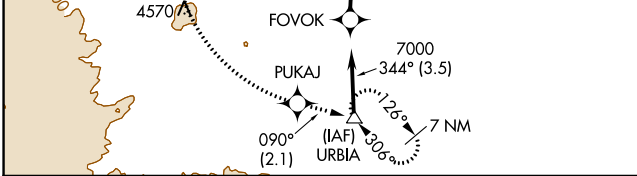
MALS MISSED APPROACH: Climb to 8500 on track 226° to TIKNE left turn to PUKAJ and on track 090° to URBIA and hold, continue climb-in-hold to 8500.

ATIS	SEATTLE CENTER	REDMOND TOWER*	GND CON	UNICOM
119.025	126.15 269.475	124.5 (CTAF) 256.8	121.8	122.95



NW-1, 28 NOV 2024 to 26 DEC 2024

NW-1, 28 NOV 2024 to 26 DEC 2024



8500	TIKNE	PUKAJ	tr 090°	URBIA	ZETBU
tr 226°					4300

CATEGORY	A	B	C	D
RNP 0.10 DA		3315-½	250 (300-½)	
RNP 0.30 DA		3552-1¼	487 (500-1¼)	

AUTHORIZATION REQUIRED

ELEV 3080	TDZE 3065
-----------	-----------

REIL Rwy 5, 11, and 29

HIRL Rwy 5-23

MIRL Rwy 11-29