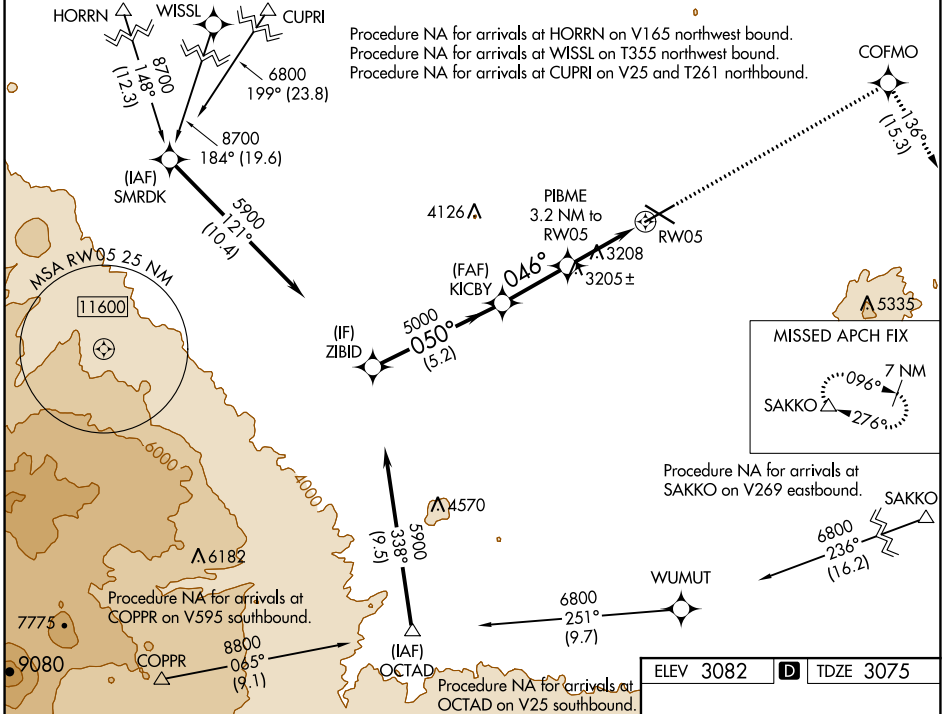


WAAS CH <b>70514</b> <b>W05A</b>	APP CRS <b>046°</b>	Rwy Idg TDZE Apt Elev	<b>7038</b> <b>3075</b> <b>3082</b>
----------------------------------------	------------------------	-----------------------------	-------------------------------------------

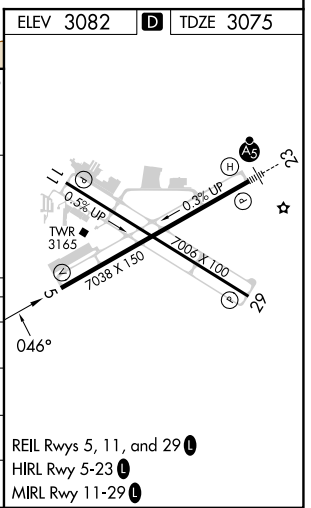
# RNAV (GPS) Y RWY 5

ROBERTS FLD (RDM)

RNP APCH.		MISSED APPROACH: Climb to 9500 direct COFMO and on track 136° to SAKKO and hold, continue climb-in-hold to 9500.				
-17°C For uncompensated Baro-VNAV systems, LNAV/VNAV NA below -22°C or above 54°C.		<b>ATIS</b> <b>119.025</b>	<b>SEATTLE CENTER</b> <b>126.15 269.475</b>	<b>REDMOND TOWER*</b> <b>124.5 (CTAF) 0 256.8</b>	<b>GND CON</b> <b>121.8</b>	<b>UNICOM</b> <b>122.95</b>



ZIBID	KICBY	PIBME	COFMO	SAKKO
5900	5000	3.2 NM to RW05	9500	tr 136°
5000	5000	338'	1.2 NM to RW05	*LNAV only
GP 3.00°	0.50°	0.46°		
TCH 50	5.2 NM	2.7 NM	2 NM	1.2 NM
	A	B	C	D
LPV DA	3275-3/4		200 (200-3/4)	
LNAV/VNAV DA	3347-7/8		272 (300-7/8)	
LNAV MDA	3520-1	445 (500-1)	3520-1 3/8	445 (500-1 3/8)
CIRCLING	3540-1 458 (500-1)	3560-1 478 (500-1)	3640-1 1/2 558 (600-1 1/2)	3740-2 658 (700-2)



NW-1, 28 NOV 2024 to 26 DEC 2024

NW-1, 28 NOV 2024 to 26 DEC 2024