

LOC/DME I-ROW 109.9 Chan 36	APP CRS 035°	Rwy Idg 13000 TDZE 3667 Apt Elev 3671
---	------------------------	--

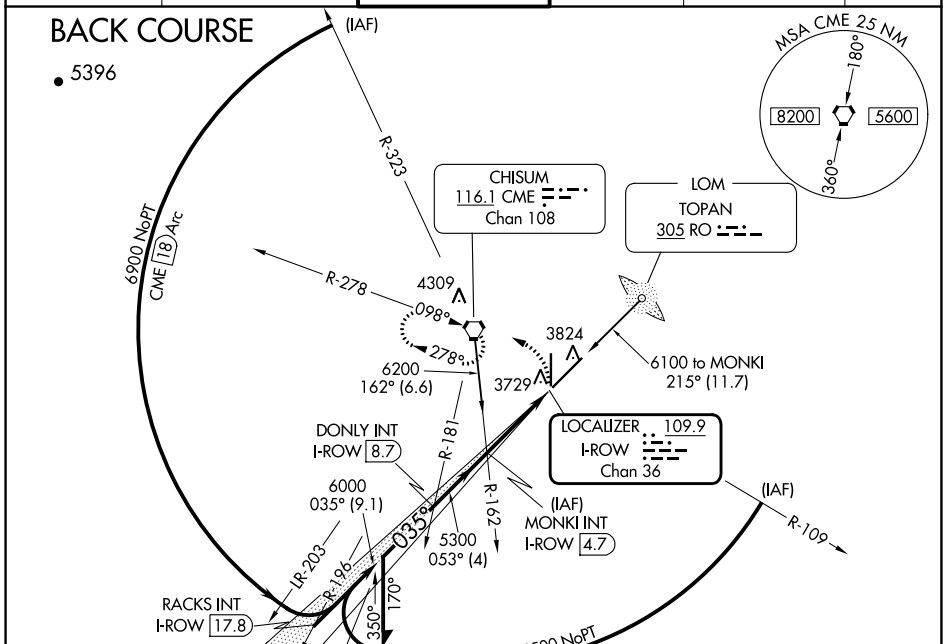
LOC BC RWY 3

ROSWELL AIR CENTER (ROW)

ASR

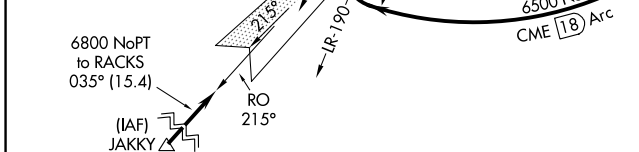
MISSED APPROACH: Climbing left turn to 6000 direct CME VORTAC and hold.

ATIS 128.45 306.2	ROSWELL APP CON * 119.6 239.0	ROSWELL TOWER * 118.5 (CTAF) 233.7	GND CON 121.9 348.6	CLNC DEL 132.875 282.25	UNICOM 122.95
-----------------------------	---	--	-------------------------------	-----------------------------------	-------------------------



SW-1, 28 NOV 2024 to 26 DEC 2024

SW-1, 28 NOV 2024 to 26 DEC 2024



Use I-ROW DME when on localizer course.

Remain within 10 NM

MONKI INT I-ROW 4.7

6000 CME

6000 035°

DONLY INT I-ROW 8.7

6000 035°

5300 053°

3.00° TCH 50

Disregard glide slope indications.

CATEGORY	A	B	C	D
S-3	4100-1 433 (500-1)	4100-1¼ 433 (500-1¼)	4100-1½ 433 (500-1½)	4100-1¾ 433 (500-1¾)
CIRCLING	4140-1 469 (500-1)	4140-1½ 469 (500-1½)	4300-2 629 (700-2)	

ELEV 3671 TDZE 3667

MIRL Rwy 3-21
MIRL Rwy 17-35

FAF to MAP 4.2 NM

Knots	60	90	120	150	180
Min:Sec	4:12	2:48	2:06	1:41	1:24