

|  |                        |  |
|--|------------------------|--|
| WAAS<br>CH <b>69302</b><br><b>W21A</b> | APP CRS<br><b>215°</b> | Rwy Idg <b>13000</b><br>TDZE <b>3633</b><br>Apt Elev <b>3671</b> |
|--|------------------------|--|

# RNAV (GPS) RWY 21

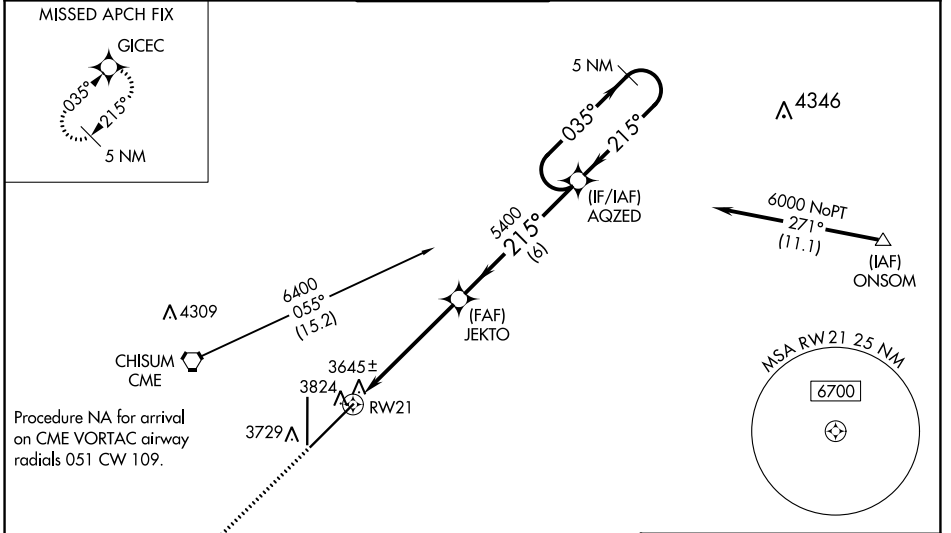
ROSWELL AIR CENTER (ROW)

RNP APCH-GPS.

**ASR** For uncompensated Baro-VNAV systems, LNAV/VNAV NA below -22°C or above 41°C. When local altimeter setting not received, use Artesia altimeter setting: increase LPV DA to 3979 feet and all visibilities 1/8 SM; increase LNAV/VNAV DA to 4075 feet and all visibilities 1/4 SM; increase all MDAs 80 feet and LNAV Cat C/D visibility 1/8 SM and Circling Cat D visibility 1/4 SM. Baro-VNAV and VDP NA when using Artesia altimeter setting. For inop ALS, increase LPV all Cats visibility to 3/8 SM, and LNAV/VNAV all Cats visibility to 1 SM. For inop ALS when using Artesia altimeter setting, increase LPV all Cats visibility to 1 SM and LNAV/VNAV all Cats visibility to 1 1/8 SM.

**MALS** MISSED APPROACH: Climb to 6300 direct GICEC and hold.

|                             |   |   |                               |                                   |                         |
|-----------------------------|---|---|-------------------------------|-----------------------------------|-------------------------|
| ATIS<br><b>128.45 306.2</b> | ROSWELL APP CON *<br><b>119.6 239.0</b> | ROSWELL TOWER *<br><b>118.5(CTAF) 233.7</b> | GND CON<br><b>121.9 348.6</b> | CLNC DEL<br><b>132.875 282.25</b> | UNICOM<br><b>122.95</b> |
|-----------------------------|---|---|-------------------------------|-----------------------------------|-------------------------|



| CATEGORY     | A                          | B | C   | D |
|--------------|----------------------------|---|---|---|
| LPV DA       | 3899-1/2                   |   | 266 (300-1/2)                                 |   |
| LNAV/VNAV DA | 3995-5/8                   |   | 362 (400-3/8)                                 |   |
| LNAV MDA     | 4080-1/2 447 (500-1/2)     |   | 4080-7/8 447 (500-7/8)                        |   |
| CIRCLING     | 4140-1 1/4 469 (500-1 1/4) |   | 4140-1 1/2 469 (500-1 1/2) 4300-2 629 (700-2) |   |

ELEV 3671 **D** TDZE 3633

0.1 X 8000'

35'

TWR 3786

13000 X 1150

0.3% DOWN

0.3% UP

MIRA Rwy 3-21

MIRA Rwy 17-35

SW-1, 28 NOV 2024 to 26 DEC 2024

SW-1, 28 NOV 2024 to 26 DEC 2024