

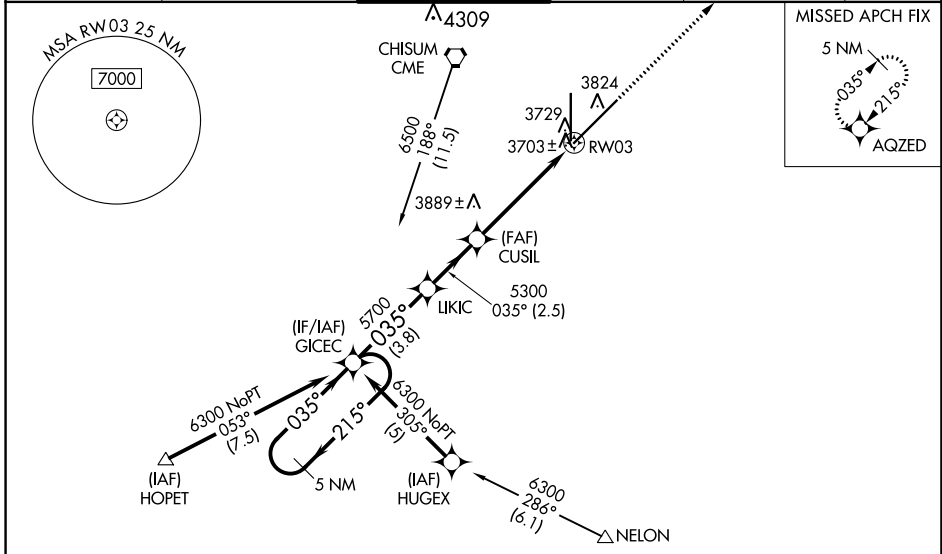
WAAS CH 50202 W03A	APP CRS 035°	Rwy Idg 13000 TDZE 3667 Apr Elev 3671
--	------------------------	--

RNAV (GPS) RWY 3

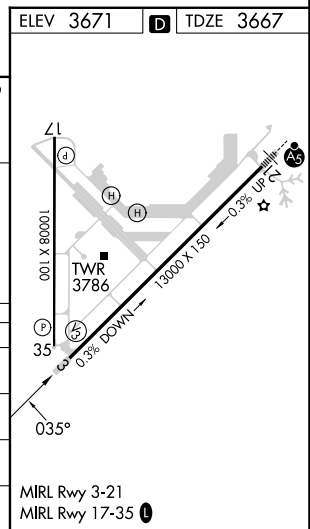
ROSWELL AIR CENTER (ROW)

RNP APCH - GPS.	<p>▲ For uncompensated Baro-VNAV systems, LNAV/VNAV NA below -22°C or above 41°C. When local altimeter setting not received, Use Artesia altimeter setting; increase LPV DA to 3997 feet and all visibilities ¼ SM; increase LNAV/VNAV DA to 4067 feet and all visibilities ½ SM; increase all MDAs 80 feet and LNAV visibility Cat C ⅔ SM, Cat D ⅝ SM and Circling visibility Cat D ½ SM. Baro-VNAV and VDP NA when using Artesia altimeter setting.</p>	<p>MISSED APPROACH: Climb to 6000 direct AQZED and hold.</p>
<p>▲ ASR</p>		

ATIS 128.45 306.2	ROSWELL APP CON * 119.6 239.0	ROSWELL TOWER * 118.5 (CTAF) 233.7	GND CON 121.9 348.6	CLNC DEL 132.875 282.25	UNICOM 122.95
-----------------------------	---	--	-------------------------------	-----------------------------------	-------------------------



5 NM Holding Pattern		GICEC	LIKIC	CUSIL	6000	AQZED
6300	← 215°	→ 035°	035°	5700	1.3 NM to RW03	RW03
GP 3.00°			5300			
TCH 50		3.8 NM	2.5 NM	3.6 NM	1.3 NM	
CATEGORY	A	B	C	D		
LPV DA	3917-¾		250 (300-¾)			
LNAV/VNAV DA	3987-1		320 (400-1)			
LNAV MDA	4140-1	473 (500-1)	4140-1¼ 473 (500-1¼)	4140-1½ 473 (500-1½)		
CIRCLING	4140-1	469 (500-1)	4140-1½ 469 (500-1½)	4300-2 629 (700-2)		



SW-1, 28 NOV 2024 to 26 DEC 2024

SW-1, 28 NOV 2024 to 26 DEC 2024