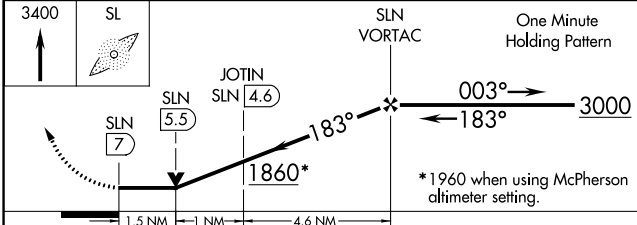
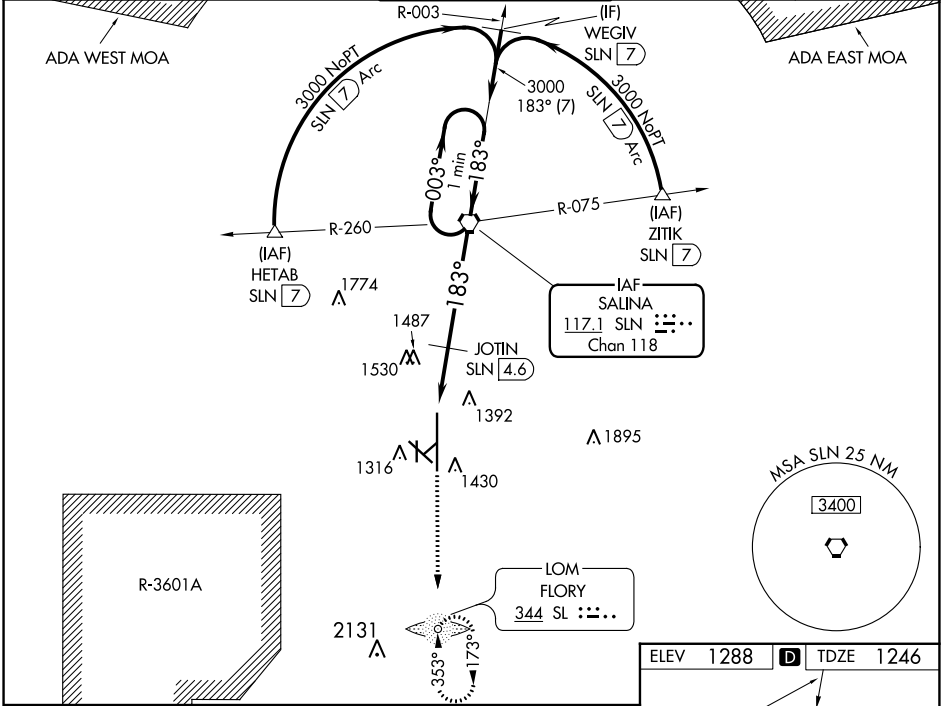


VORTAC SLN 117.1 Chan 118	APP CRS 183°	Rwy Idg 12300 TDZE 1246 Apt Elev 1288
---	------------------------	--

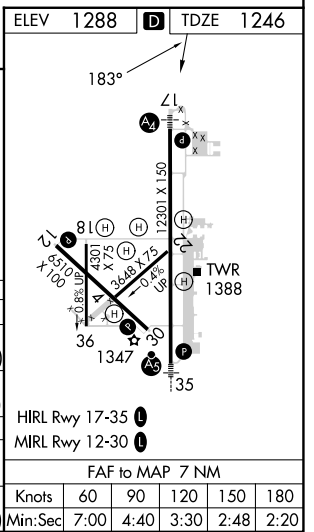
VOR RWY 17

SALINA RGNL (SLN)

<p>▽ Inoperative table does not apply to Cat C/D/E. ▲ Circling NA for Cat D/E southwest of Rwy 12-30. ADF required.</p>	<p>MALS</p>	<p>MISSED APPROACH: Climb to 3400 direct SL LOM and hold.</p>		
<p>ATIS 120.15</p>	<p>KANSAS CITY CENTER 134.9 363.2</p>	<p>SALINA TOWER * 119.3 (CTAF) 0 257.7</p>	<p>GND CON 121.9 360.8</p>	<p>UNICOM 122.95</p>



CATEGORY	A	B	C	D	E
S-17	1860-¾ 614 (600-¾)		1860-1¾ 614 (600-1¾)	1860-2 614 (600-2)	1860-2½ 614 (600-2½)
CIRCLING	1860-1 572 (600-1)		1860-1¾ 572 (600-1¾)	1860-2 572 (600-2)	1920-2½ 632 (700-2½)
JOTIN FIX MINIMUMS					
S-17	1760-¾ 514 (500-¾)		1760-1½ 514 (500-1½)	1760-1¾ 514 (500-1¾)	
CIRCLING	1820-1 532 (600-1)	1840-1 552 (600-1)	1860-1½ 572 (600-1½)	1860-2 572 (600-2)	1920-2½ 632 (700-2½)



NC-2, 28 NOV 2024 to 26 DEC 2024

NC-2, 28 NOV 2024 to 26 DEC 2024

FAF to MAP 7 NM					
Knots	60	90	120	150	180
Min:Sec	7:00	4:40	3:30	2:48	2:20