

BOWIE SEVEN DEPARTURE

**TOP ALTITUDE:
5000**

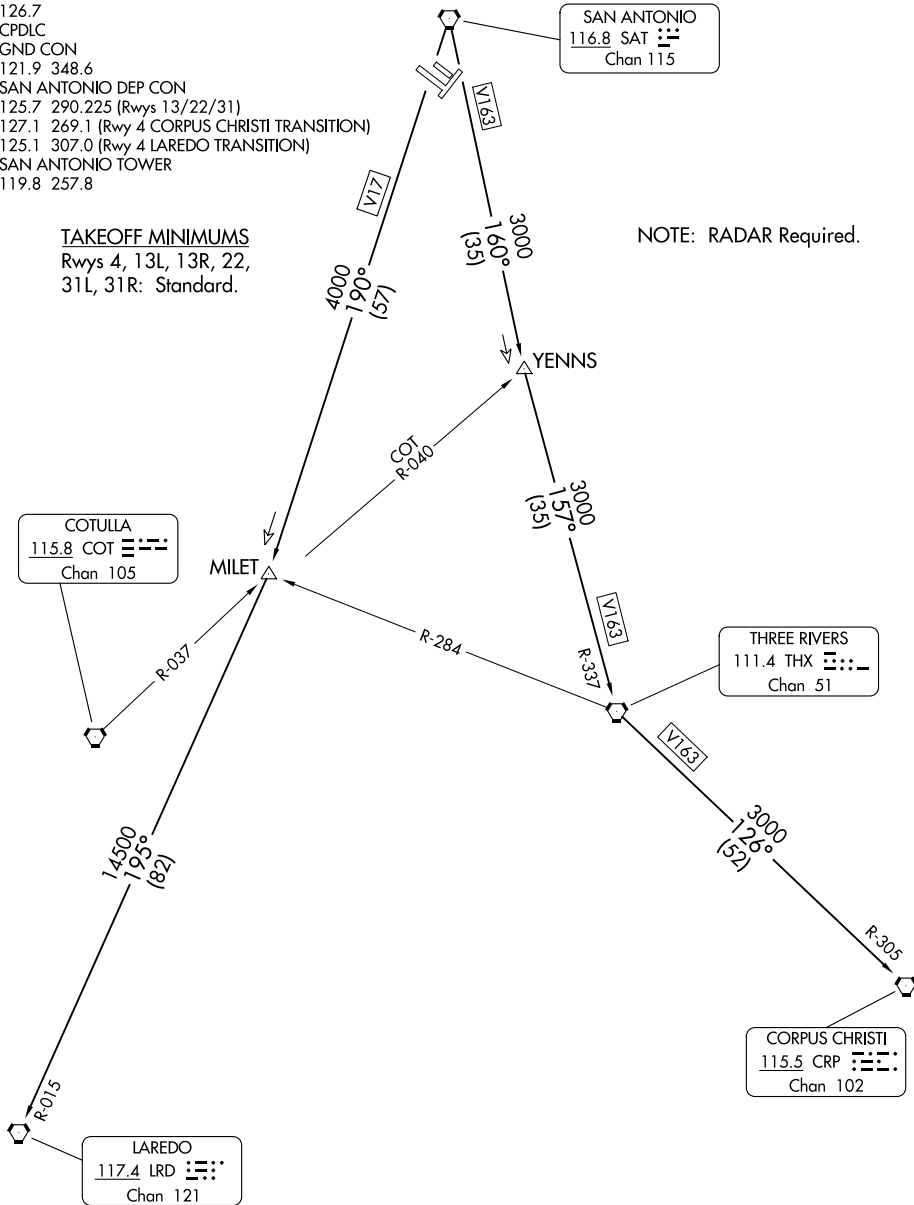
D-ATIS
118.9
CLNC DEL
126.7
CPDLC
GND CON
121.9 348.6

SAN ANTONIO DEP CON
125.7 290.225 (Rwys 13/22/31)
127.1 269.1 (Rwy 4 CORPUS CHRISTI TRANSITION)
125.1 307.0 (Rwy 4 LAREDO TRANSITION)
SAN ANTONIO TOWER
119.8 257.8

TAKEOFF MINIMUMS

Rwys 4, 13L, 13R, 22,
31L, 31R: Standard.

NOTE: RADAR Required.



SC-3, 28 NOV 2024 to 26 DEC 2024

SC-3, 28 NOV 2024 to 26 DEC 2024

NOTE: Chart not to scale.

(CONTINUED ON FOLLOWING PAGE)

BOWIE SEVEN DEPARTURE