

# QERVO ONE ARRIVAL (RNAV) Transition Routes

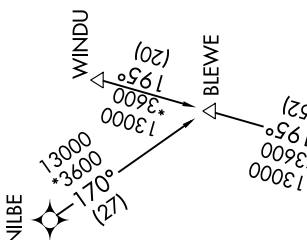
SAN ANTONIO, TEXAS

SC-3, 28 NOV 2024 to 26 DEC 2024

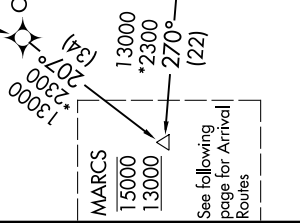
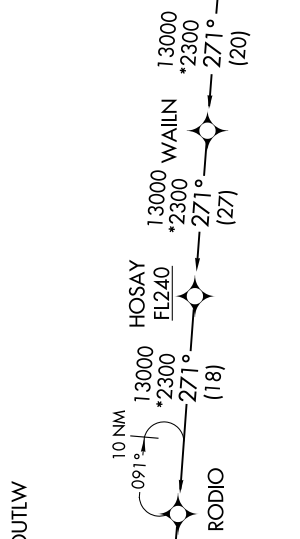
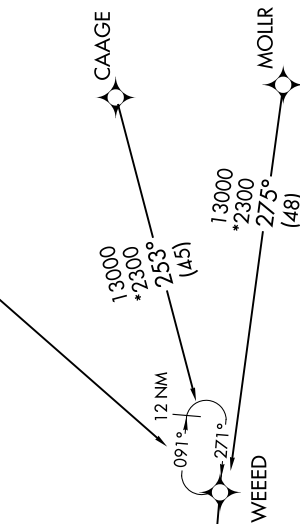
- BLEWE TRANSITION (BLEWE.QERVO1)
- CAAGE TRANSITION (CAAGE.QERVO1)
- LEAD TRANSITION (LEAD.QERVO1)
- MOLLR TRANSITION (MOLLR.QERVO1)
- NILBE TRANSITION (NILBE.QERVO1)
- WAILN TRANSITION (WAILN.QERVO1)
- WINDU TRANSITION (WINDU.QERVO1)

RNAV 1-DME/DME/IRU or GPS.
RADAR required.

SAN ANTONIO APP CON  
 127.1 269.1  
 BAZ ATIS  
 119.325  
 KRND ATIS\*  
 290.525  
 KSKF ATIS  
 120.45 273.5  
 SAT D-ATIS  
 118.9  
 SSF ATIS  
 128.8



NOTE: Jet and turboprop aircraft only.  
 NOTE: WAILN Transition for Houston terminal Area Departures only.



See following page for Arrival Routes

(CONTINUED ON FOLLOWING PAGE)

NOTE: Chart not to scale.

SC-3, 28 NOV 2024 to 26 DEC 2024

# QERVO ONE ARRIVAL (RNAV) Transition Routes

SAN ANTONIO, TEXAS