

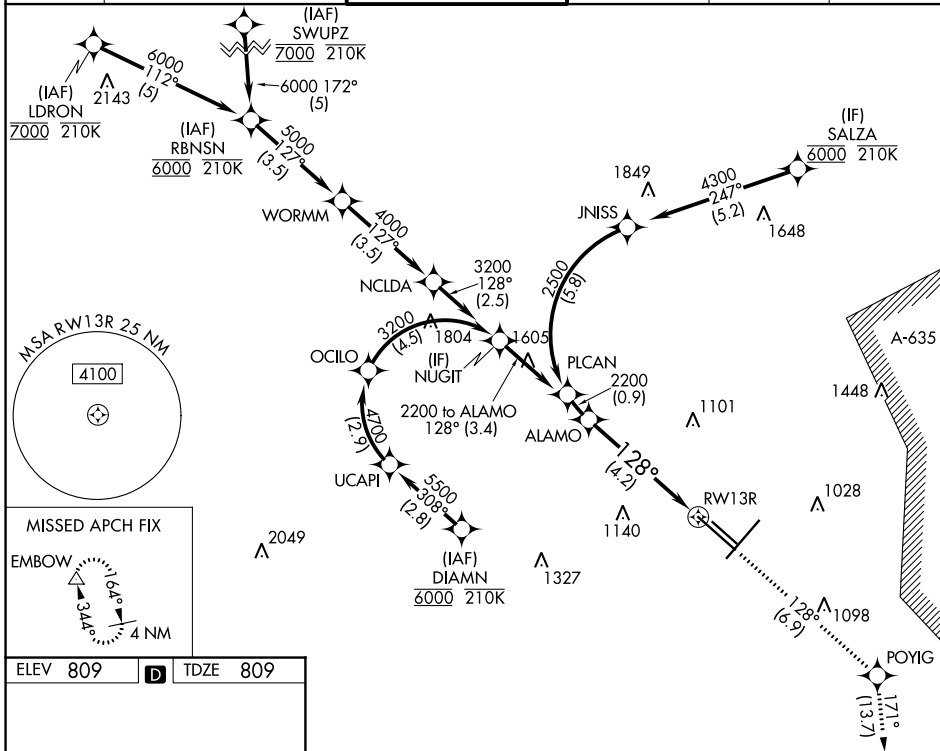
# RNAV (RNP) Z RWY 13R

SAN ANTONIO INTL (SAT)

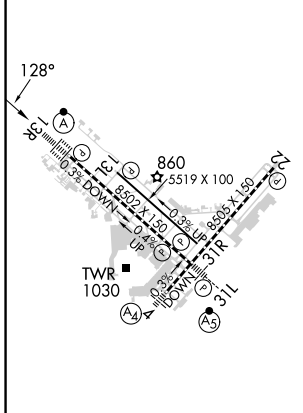
APP CRS	Rwy Idg	<b>8502</b>
<b>128°</b>	TDZE	<b>809</b>
	Apt Elev	<b>809</b>

RNP AR APCH - GPS		ALSIF-2	MISSED APPROACH: (Do not exceed 210K until POYIG) Climb to 3100 on track 128° to POYIG and track 171° to EMBOW and hold.		
For uncompensated Baro-VNAV systems, procedure NA below -5°C or above 54°C. For inop ALS, increase RNP 0.3 all Cats visibility to RVR 6000.					

D-ATIS	SAN ANTONIO APP CON	SAN ANTONIO TOWER	GND CON	CLNC DEL	CPDLC
<b>118.9</b>	<b>125.1 307.0</b>	<b>119.8 257.8</b>	<b>121.9 348.6</b>	<b>126.7</b>	



ELEV 809	<b>D</b>	TDZE 809
----------	----------	----------



VGSI and RNAV glidepath not coincident (VGSI Angle 3.00/TCH 75).

3100	POYIG	EMBOW
tr 128°	tr 171°	

See planview for multiple IF locations.

CATEGORY	A	B	C	D
RNP 0.15 DA		1137/26	328 (400-½)	
RNP 0.30 DA		1218/40	409 (500-¾)	

**AUTHORIZATION REQUIRED**

TDZ/CL Rwy 13R  
REIL Rwy 13L, 22 and 31R  
HIRL Rwy 4-22 and 13R-31L  
MIRL Rwy 13L-31R

SC-3, 28 NOV 2024 to 26 DEC 2024

SC-3, 28 NOV 2024 to 26 DEC 2024