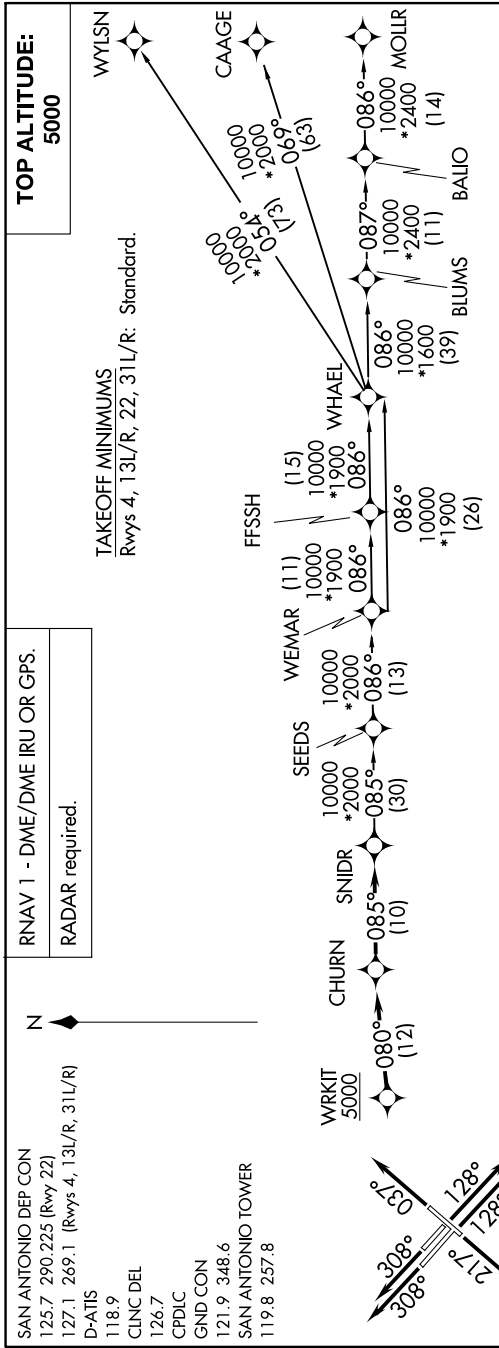


SNIDR ONE DEPARTURE (RNAV)

SC-3, 28 NOV 2024 to 26 DEC 2024



DEPARTURE ROUTE DESCRIPTION

TAKEOFF RUNWAY 4: Climb on heading 037° or as assigned by ATC, for vectors to WRKIT, thence. . . .
 TAKEOFF RUNWAY 13L/R: Climb on heading 128° or as assigned by ATC, for vectors to WRKIT, thence. . . .
 TAKEOFF RUNWAY 22: Climb on heading 217° or as assigned by ATC, for vectors to WRKIT, thence. . . .
 TAKEOFF RUNWAY 31L/R: Climb on heading 308° or as assigned by ATC, for vectors to WRKIT, thence. . . .

. . . on track 080° to CHURN, then on track 085° to SNIDR, then on transition. Maintain 5000.

BLUMS TRANSITION (SNIDR1.BLUMS)
CAAGE TRANSITION (SNIDR1.CAAGE)
FFSSH TRANSITION (SNIDR1.FFSSH)
MOLLR TRANSITION (SNIDR1.MOLLR)
SEEDS TRANSITION (SNIDR1.SEEDS)
WEMAR TRANSITION (SNIDR1.WEMAR)
WHAEL TRANSITION (SNIDR1.WHAEL)
WYLSN TRANSITION (SNIDR1.WYLSN)

SC-3, 28 NOV 2024 to 26 DEC 2024

Note: Chart not to scale.