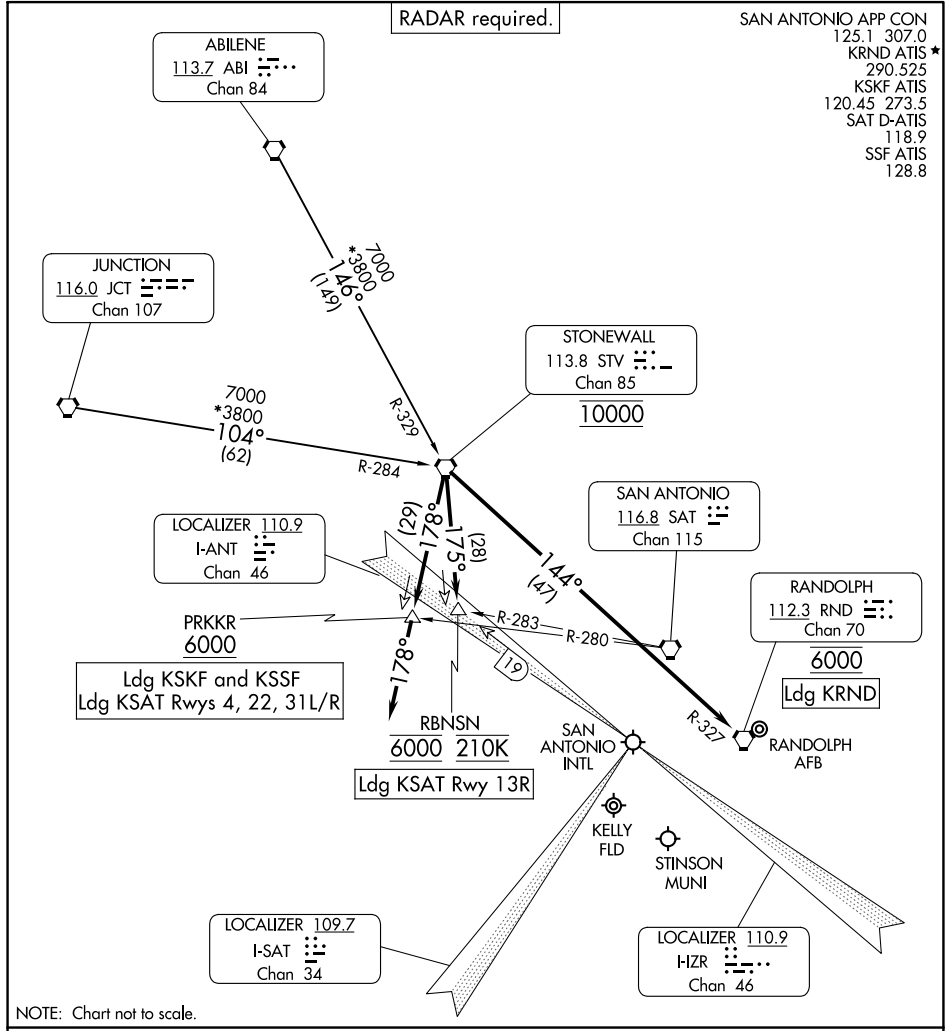


STONEWALL TWO ARRIVAL

SAN ANTONIO, TEXAS



SAN ANTONIO APP CON
 125.1 307.0
 KRND ATIS *
 290.525
 KSKF ATIS
 120.45 273.5
 SAT D-ATIS
 118.9
 SSF ATIS
 128.8

SC-3, 28 NOV 2024 to 26 DEC 2024

SC-3, 28 NOV 2024 to 26 DEC 2024

ARRIVAL ROUTE DESCRIPTION

ABILENE TRANSITION (ABI.STV2): From over ABI VORTAC on ABI R-146 and STV R-329 to STV VORTAC. Thence

JUNCTION TRANSITION (JCT.STV2): From over JCT VORTAC on JCT R-104 and STV R-284 to STV VORTAC. Thence

LANDING KSAT RUNWAY 13R: From STV VORTAC on STV R-175 to cross RBNSN at 6000 and at 210K, expect ILS or LOC Rwy 13R approach.

LANDING KSAT RUNWAYS 4, 22, 31L/R, KSKF/KSSF: From STV VORTAC on STV R-178 to cross PRKKR at or above 6000, then on heading 178°, expect RADAR vectors to final approach course.

LANDING KRND: From STV VORTAC on STV R-144 and RND R-327 to cross RND VORTAC at 6000, expect RADAR vectors to final approach course.

STONEWALL TWO ARRIVAL

SAN ANTONIO, TEXAS