

(YODUH1.YODUH) 24081

AL-369 (FAA)

SAN ANTONIO INTL (SAT)

YODUH ONE DEPARTURE (RNAV)

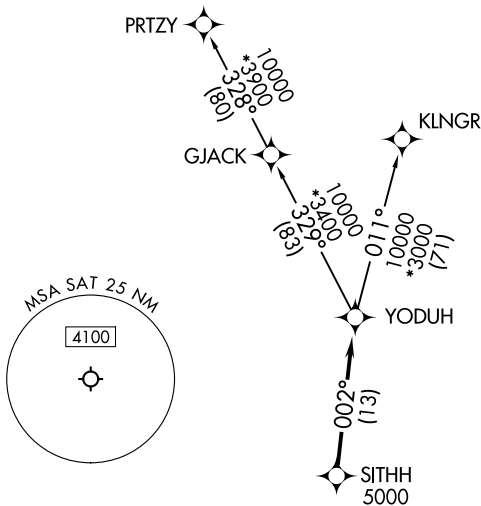
SAN ANTONIO, TEXAS

RNAV 1 - DME/DME IRU or GPS.

**TOP ALTITUDE:
5000**

RADAR required.

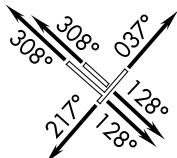
SAN ANTONIO DEP CON
 125.1 307.0 (Rwy 31L/R)
 125.7 290.225 (Rwy 22)
 127.1 269.1 (Rwys 4, 13L/R)
 D-ATIS
 118.9
 CLNC DEL
 126.7
 CPDLC
 GND CON
 121.9 348.6
 SAN ANTONIO TOWER
 119.8 257.8



TAKEOFF MINIMUMS

Rwys 4, 13L/R, 22, 31L/R: Standard.

NOTE: Aircraft destined for airports north/northeast of DFW terminal area must file the KLNGR Transition.



NOTE: Chart not to scale.



DEPARTURE ROUTE DESCRIPTION

TAKEOFF RUNWAY 4: Climb on heading 037° or as assigned by ATC, for vectors to SITHH, thence . . .

TAKEOFF RUNWAYS 13L/R: Climb on heading 128° or as assigned by ATC, for vectors to SITHH, thence . . .

TAKEOFF RUNWAY 22: Climb on heading 217° or as assigned by ATC, for vectors to SITHH, thence . . .

TAKEOFF RUNWAYS 31L/R: Climb on heading 308° or as assigned by ATC, for vectors to SITHH, thence . . .

. . . on track 002° to YODUH, then on Transition. Maintain 5000.

KLNGR TRANSITION (YODUH1.KLNGR)

PRTZY TRANSITION (YODUH1.PRTZY)

YODUH ONE DEPARTURE (RNAV)

(YODUH1.YODUH) 25JAN24

SAN ANTONIO, TEXAS
SAN ANTONIO INTL (SAT)

SC-3, 28 NOV 2024 to 26 DEC 2024

SC-3, 28 NOV 2024 to 26 DEC 2024